



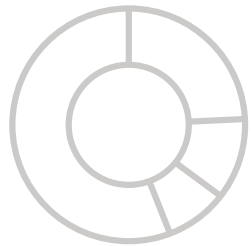
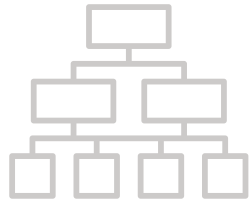
University Analytics  
& Institutional Research

## EXPLORE ARIZONA THROUGH DATA

FOCUS ON STUDENT DATA



# OVERVIEW



- **WELCOME!**
- **EXPLORING DATA LITERACY**
- **EXPLORING INTERACTIVE FACT BOOK**
- **EXPLORING STUDENT RETENTION & GRADUATION DATA**
- **EXPLORING CURRICULAR FLOW DATA**
- **CONCLUSION**



A Specific Question from the Survey:  
**What can I learn from the available data?**



A Specific Question from the Survey:

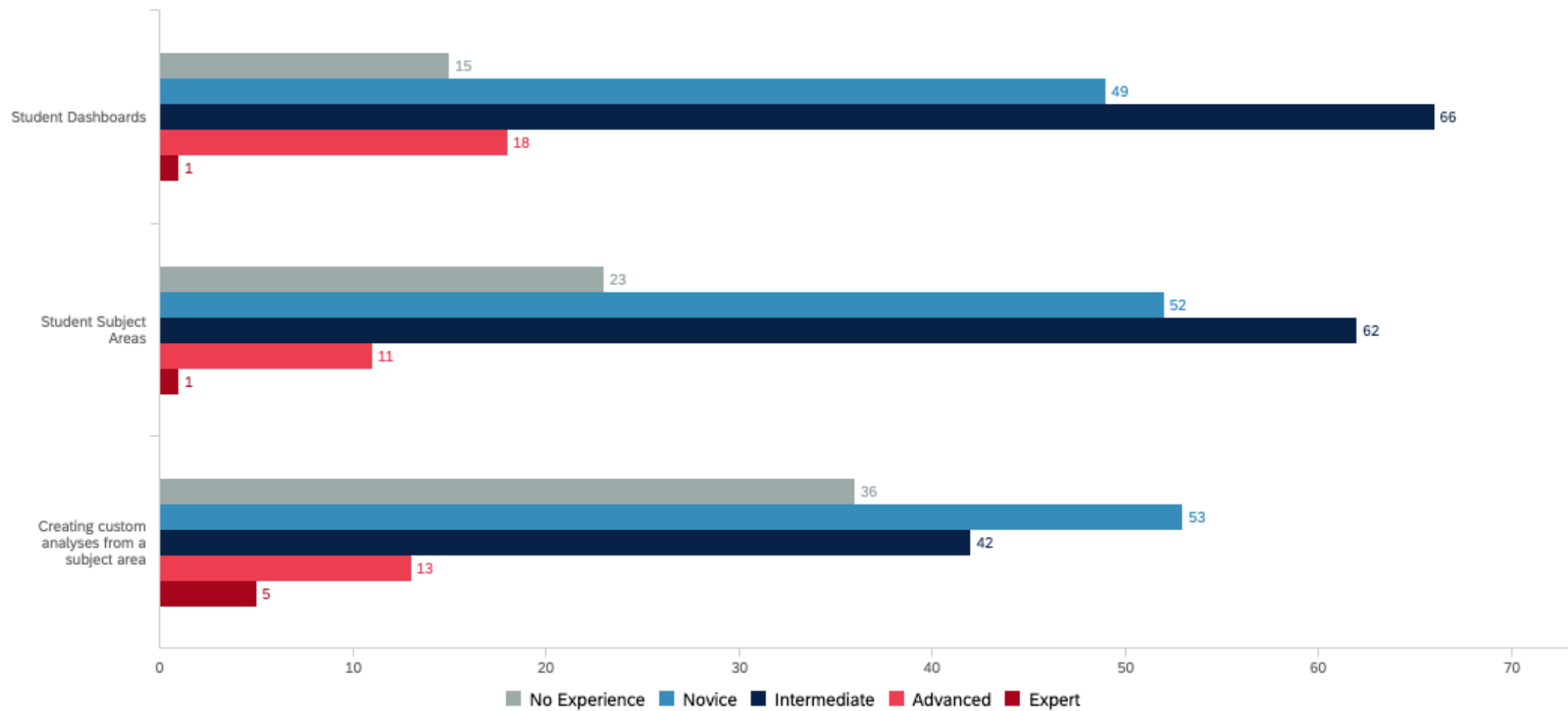
# **What do I need to know before exploring student data?**





# WELCOME | Who is here today?

Survey Question 3: Please rank your level of experience with the following UAccess Analytics products/services?



The Family Educational Rights and Privacy Act (FERPA)

**All student data holders must act responsibly and be held accountable for safeguarding students' personally identifiable information (PII) from education records.**



# EXPLORING DATA LITERACY

Jessica Gerlach, IT Training & Support Specialist



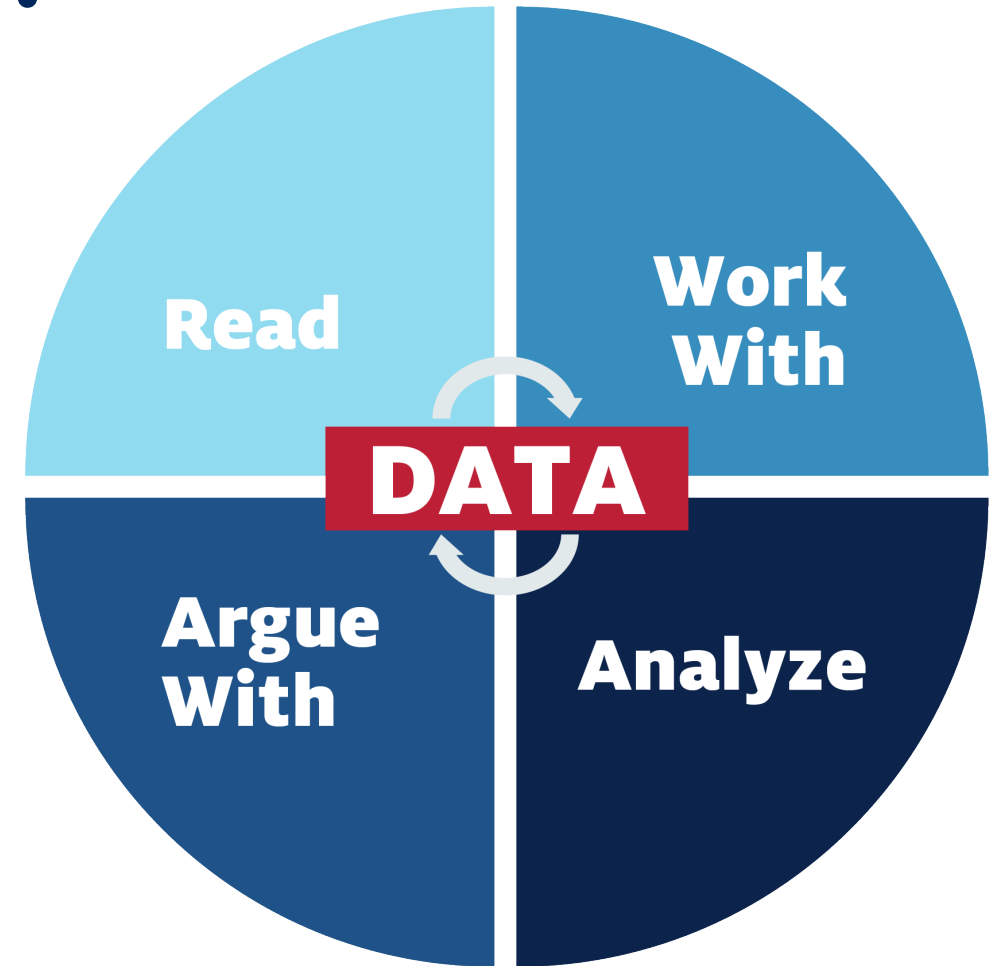
# WHO WE ARE & WHY WE ARE HERE

**UAIR IS COMMITTED TO** providing data that empowers campus decision makers, informs policy and practice, and tells the Arizona story.



# WHAT IS DATA LITERACY?

**DATA LITERACY** is the ability to read, work with, analyze, and argue with data. Improving data literacy hones your decision-making ability.



# DATA-INFORMED DECISION MAKING

**EVERY EMPLOYEE** should be **empowered** to make data informed decisions. We are committed to empowering the university community to understand and work with data.



A Specific Question from the Survey:

**How do I know where my data comes from  
and if it is accurate?**



# HOW MANY OF YOU INPUT DATA INTO UACCESS SYSTEMS?






## STUDENTS

Student Center	●
Guest Center	●
Instructor Center	●
Administrative Staff	●

## ADMINISTRATIVE SYSTEMS

Employee / Manager Self Service	●	Learning	●
Analytics / Reporting 	●	Research 	●
RBC System (Budget)	●	Space 	●
Financials 	●	Adaptive Insights (Planning)	●

## SUPPORT

### 24/7 IT Support Center

- [Request Assistance or Report a Problem](#)

### Requesting Access

- [UAccess Access Provisioning Tool](#) 

### UAccess Community

- [System Resources, Forums and Training](#)

## INFORMATION

### University Business Event Tracking

- [University Business Event Tracking \(UBET\)](#)


### Maintenance Window

- Every Sunday, 6am to 6pm

### Financials Batch Processing

- Mon-Fri, 8pm to 7am
- Sat-Sun, midnight to 5:30am
- Wed of Payroll Weeks, 7pm to 7am

## LEGEND

- = System up
- ▲ = Intermittent or limited access
- = System down
-  = Restricted Access System  
Requires use of the [UA VPN](#) when accessed from off-campus. For assistance, please contact the [24/7 IT Support Center](#) at [626-TECH \(8324\)](#).

# WHERE DOES THE DATA COME FROM?

**DATA** must be collected, organized, and stored in a data warehouse. The systems that collect this data are often referred to as *transaction systems*. At the University of Arizona, most of our data originates in the UAccess Systems.



A Specific Question from the Survey:

# **How can I better leverage student data in my job?**



A Specific Question from the Survey:  
**When and how do I best use the  
Interactive Fact Book?**



# EXPLORING THE INTERACTIVE FACT BOOK: RETENTION & GRADUATION

Jessica Gerlach, IT Training & Support Specialist



# THE VALUE OF THE INTERACTIVE FACT BOOK

**UAIR MAINTAINS THE INTERACTIVE FACT BOOK,**  
a user friendly and interactive online tool that  
empowers leaders with information that focuses on  
student, staff, faculty, and finance data.



# How many students are enrolled at the university?

THE UNIVERSITY OF ARIZONA

## Institutional Profile

### ADMISSIONS & ENROLLMENT | FALL 2019

45,918  
Enrolled Students

83.2%  
First-Year Retention Rate  
(Entry Cohort: Fall 2018)

#### FIRST-YEAR Admissions Pipeline

Applicants	40,854
Admits	34,558
Enrolled	7,684

#### FIRST-YEAR Commitment to Access

AZ Resident	56.8%
Female	57.3%
Student of Color	43.0%
AZ Student of Color	52.7%
Age 25+	0.4%
International	5.3%

#### FALL ENROLLMENT Campus and Career

	Undergraduate Students	Graduate Students	Total Enrolled
Main	31,721	6,902	38,623
Online	2,109	2,368	4,477
Other	1,971	847	2,818
<b>Total Enrollment</b>	<b>35,801</b>	<b>10,117</b>	<b>45,918</b>

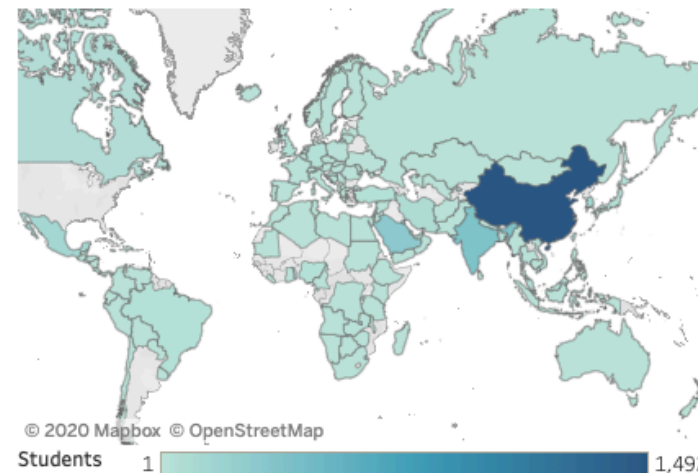
Other includes Distance, Phoenix, Community and South campuses.

#### INTERNATIONAL ENROLLMENT AT MAIN CAMPUS Country Representation

There are 120 countries represented by the international student enrollment.

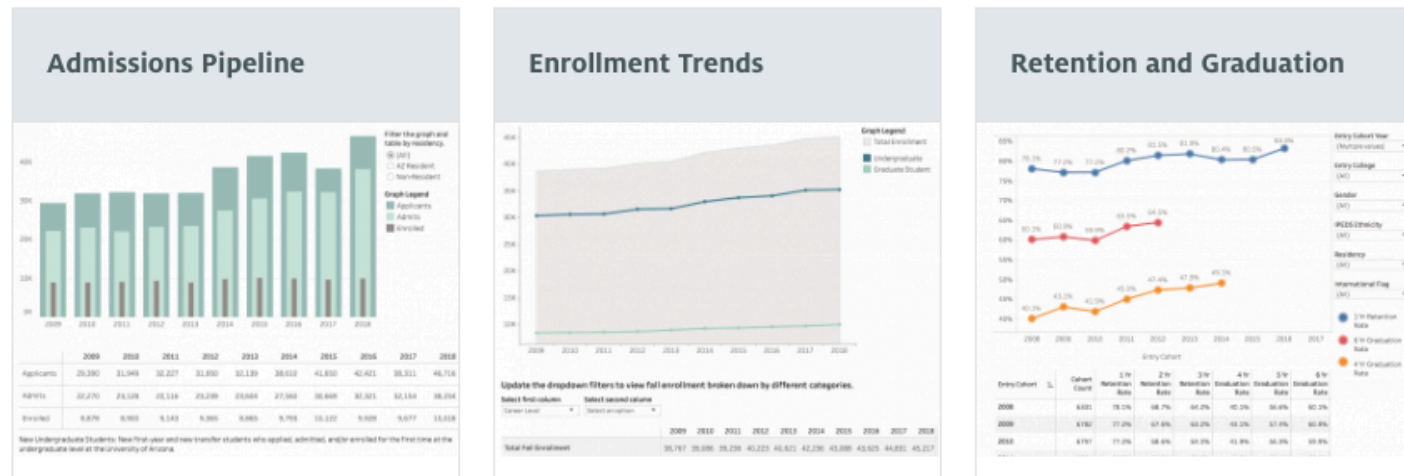
##### Top Five Countries Represented

China	1,492
India	374
Saudi Arabia	296
Kuwait	185
Mexico	138



# FREELY AVAILABLE TO EVERYONE

**INTERACTIVE FACT BOOK** contains current and historical data about the University of Arizona, including information on Student, Faculty & Staff, Finance, and Research.





# RETENTION & GRADUATION RATES

**RETENTION & GRADUATION RATES** are available in the Interactive Fact Book starting with the fall 2009 entry cohort. Data can be filtered by entry college, gender, IPEDS race/ethnicity and residency status.



# Retention and Graduation

The University of Arizona calculates official retention & graduation rates with first-time, full-time students in the fall cohort, as defined by IPEDS. The student must be enrolled on the 21<sup>st</sup> day of the subsequent fall semester to be counted as retained in the census file. Census files ensure reliability (historical reports can be replicated) and comparability (especially with other institutions' counts), and produce meaningful trends over time.

83.2%

1-Year Retention Rate  
(Fall 2018 Entry Cohort)

49.8%

4-Year Graduation Rate  
(Fall 2015 Entry Cohort)

64.7%

6-Year Graduation Rate  
(Fall 2013 Entry Cohort)

Overview

Institutional Profile

Student

Admissions Pipeline

New Student Admission Scores

Enrollment

Full-Time Equivalent Enrollment

Retention and Graduation

Degrees and Majors Awarded

Tuition and Mandatory Fees

Honors College

College of Medicine

Faculty and Staff

Workforce Demographics

Faculty Demographics

Faculty Tenure

Finance

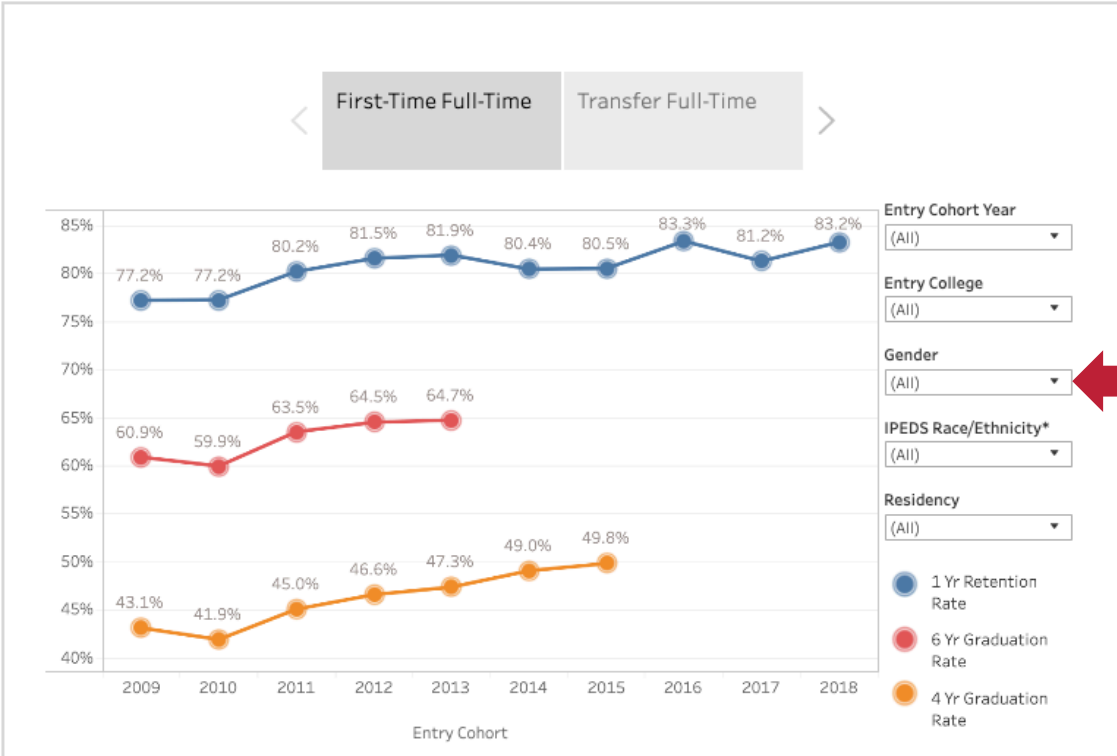
Revenue & Expenditures

Budget

Research

Sponsored Awards & Proposals

R&D Expenditures



Users can filter the data using the dropdown menus.

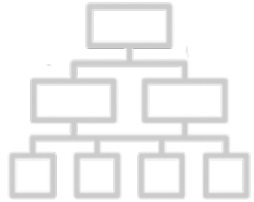
# DRILLING DEEPER INTO THE DATA

**WE HAVE ADDED** the ability for UAccess Analytics users to link to the dashboard reports that drive this data. Thus, allowing users to get more data for provisioned users.

University faculty and staff with appropriate credentials can log in to **UAccess Analytics** ▼ for more information.



# WHAT QUESTIONS CAN IT ANSWER?



- What are the university retention rates in my college?
- What is the graduation rate for full-time transfer students who come from 2-year institutions?



- What is the university 4-year graduation rate for first-time full-time students from underrepresented student populations?



- How do I drill into the data of the Interactive Fact Book in UAccess Analytics?



A Specific Question from the Survey:

**How can I better analyze my program's impact on student's first-year retention rates?**

# How can I better analyze my program's impact on student's first-year retention rates?

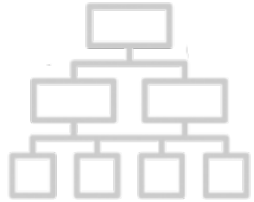


# EXPLORING STUDENT RETENTION & GRADUATION RATES

Ruben Parra, Senior Data Analyst



# STUDENT RETENTION & GRADUATION



- **DATA SOURCE:** CSW – STUDENT RETENTION AND GRADUATION
- **TOOLS:** RETENTION AND GRADUATION DASHBOARDS
  - First Year
  - Transfer
  - Cohort Analysis



*Security Role: Open to users with Student Medium (BI\_SA\_MED) or higher*





# RETENTION & GRADUATION RATES

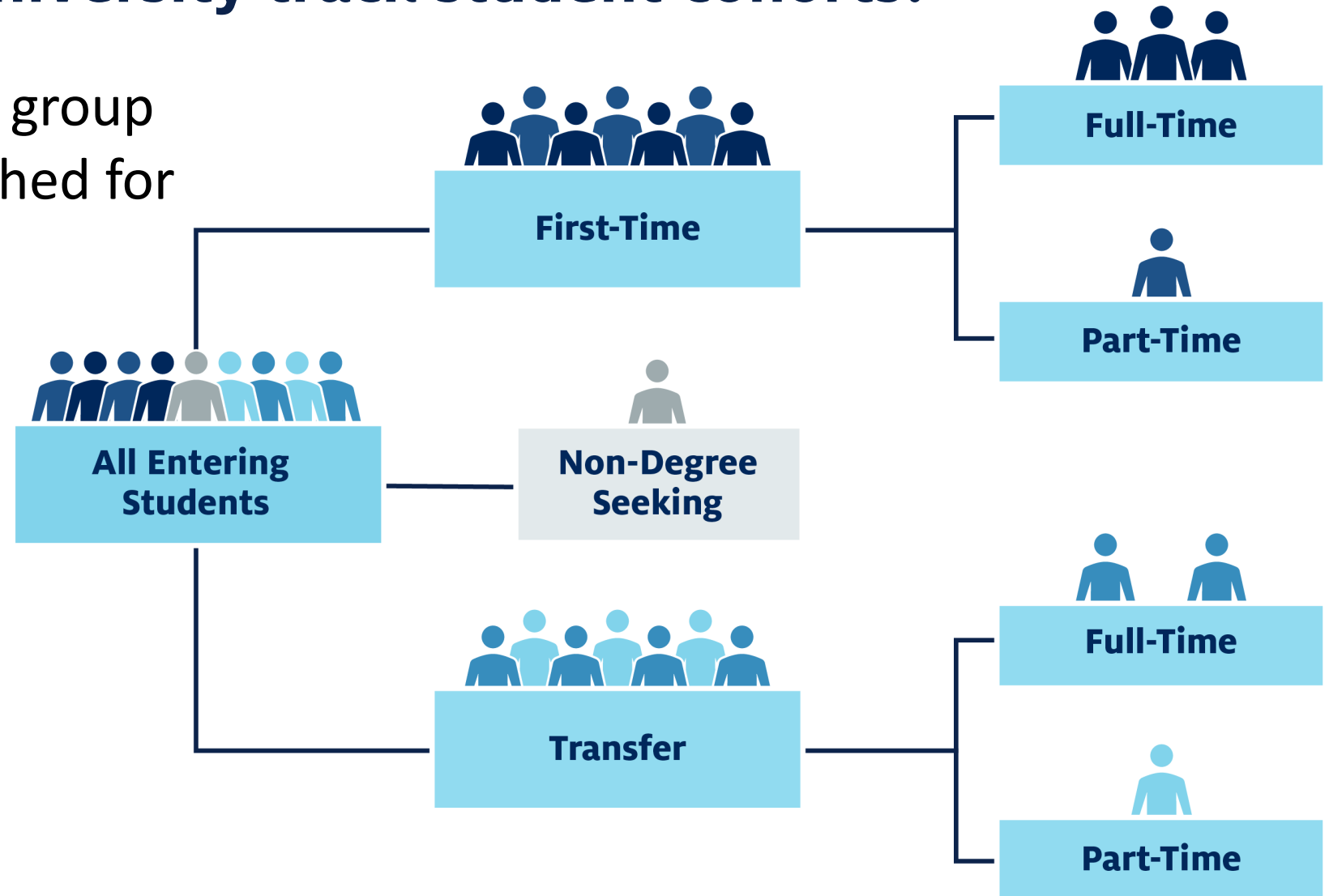
SUBJECT AREA: CSW – Student Retention and Graduation

**CSW – STUDENT RETENTION AND GRADUATION** is a subject area that serves as the data set used to build all formal, externally reported Retention and Graduation metrics for First-Time Full-Time (FTFT) students. It is also possible to report on undergraduate Part-Time and Transfer students.



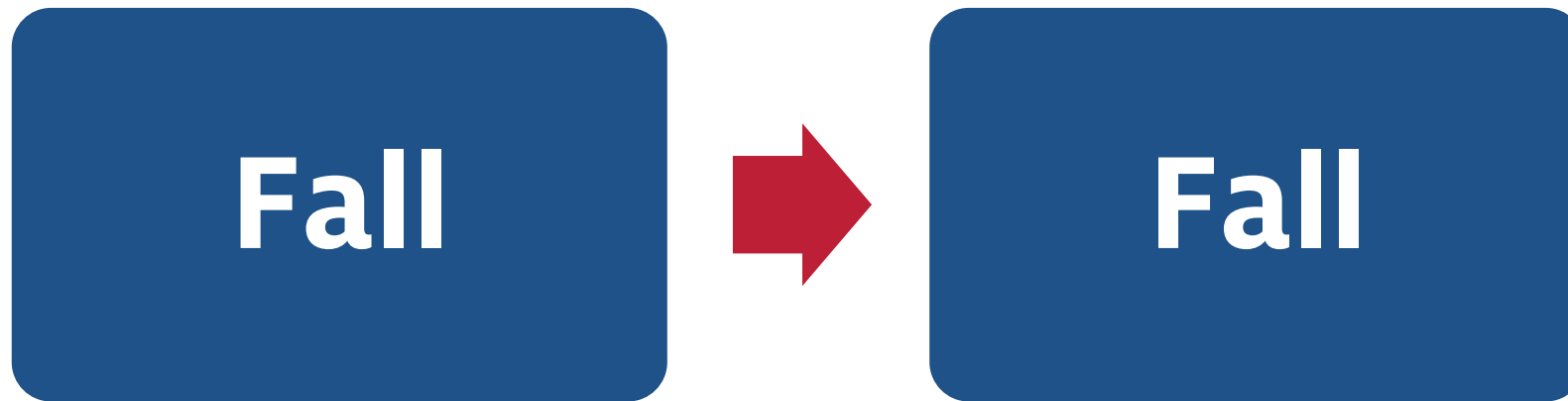
# How does the university track student cohorts?

**COHORT:** A specific group of students established for tracking purposes.

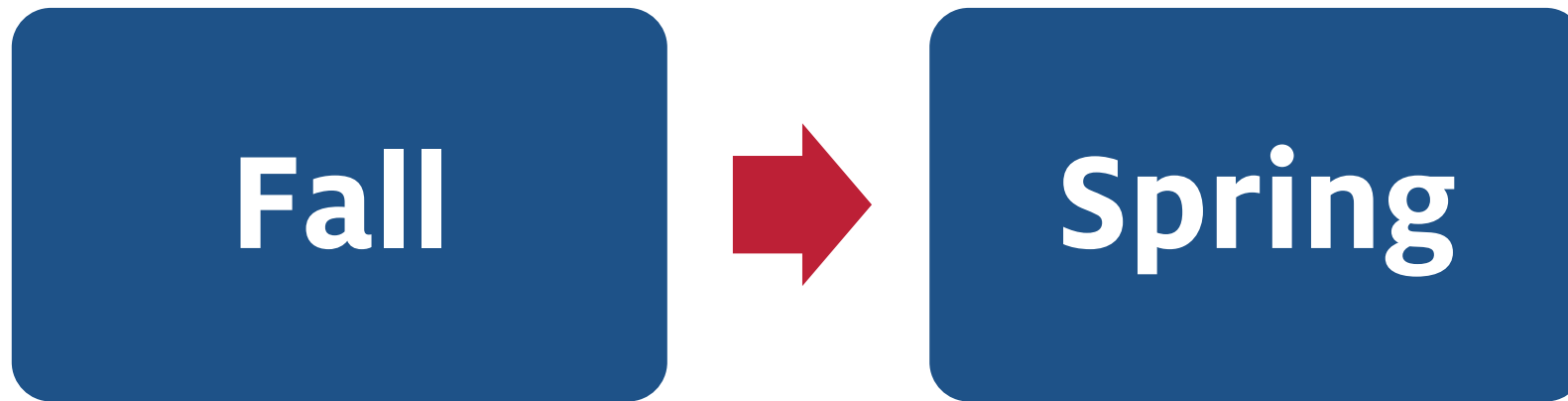


# How does the university define first year retention?

**FIRST YEAR RETENTION:** A student must be enrolled on the 21<sup>st</sup> day of the following Fall semester.

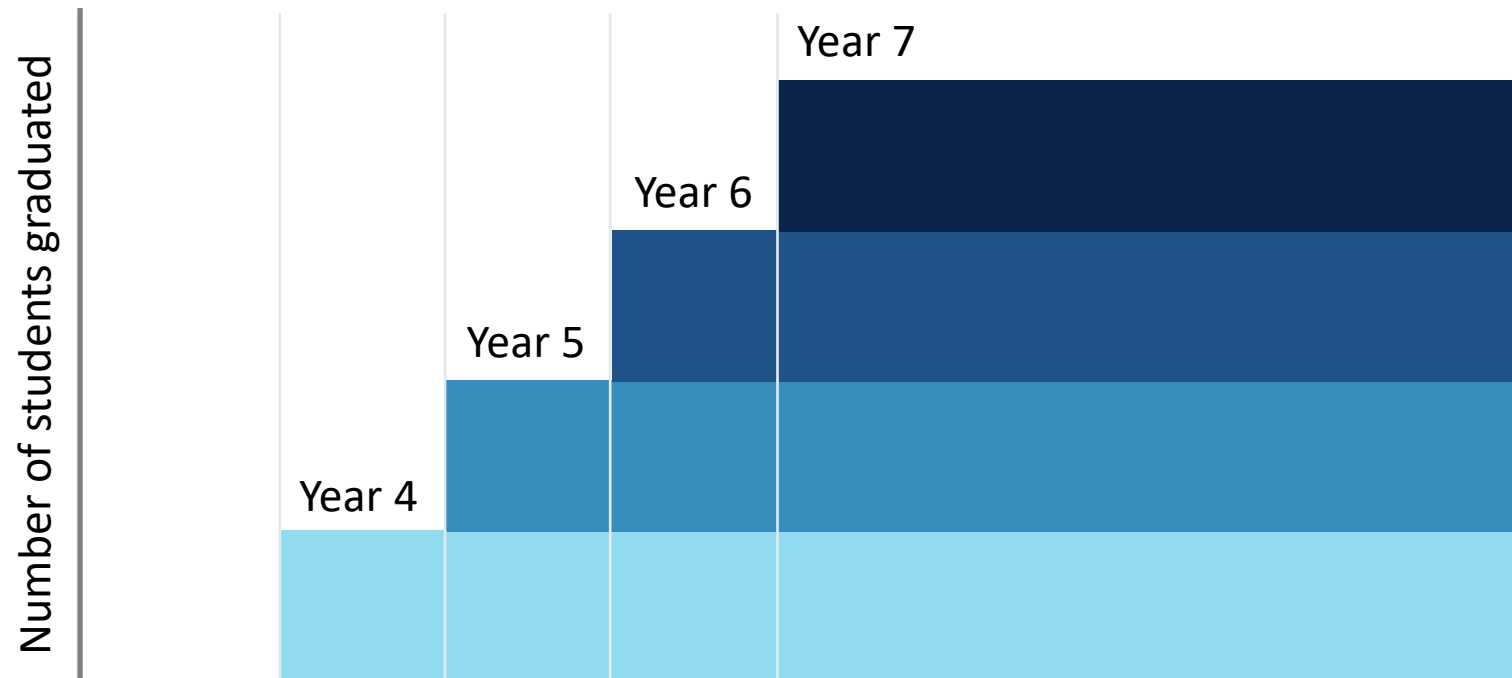


In addition to the official census Fall to Fall retention rates, the university collects data on the term to term retention of students.



# What is the university's definition of graduation rate?

**GRADUATION RATE:** A student must have completed their coursework and been awarded their degree.  
The % increases every year.

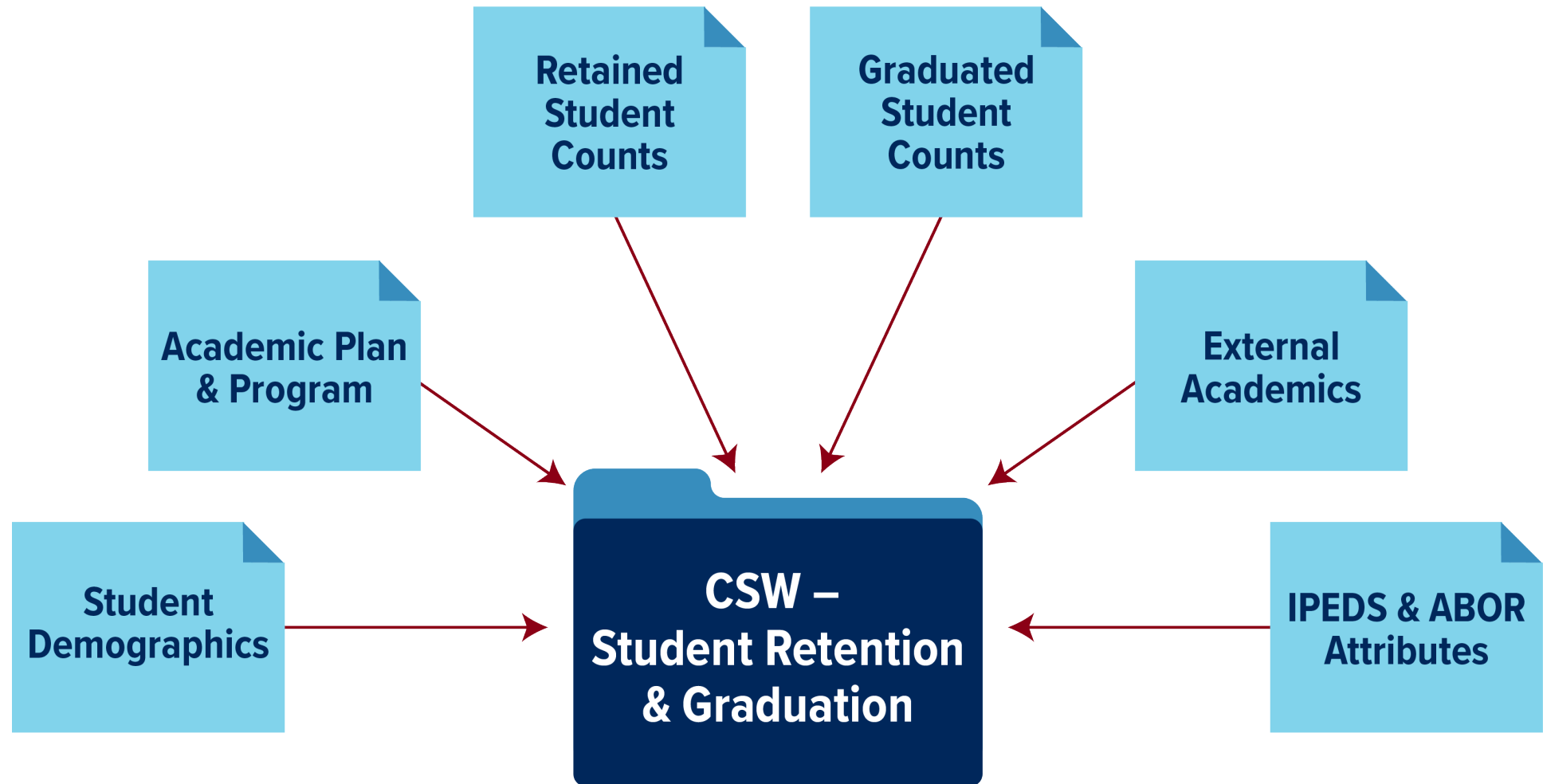


# How is the CSW – Student Retention and Graduation subject area commonly used?

**COMMON USES** for this subject area include official external reporting on Retention and Graduation rates to federal and state agencies, higher education organizations, and media publishers.

*This subject area is the data source for the **Retention and Graduation** dashboards.*

# TYPES OF INFORMATION



*This subject area uses census snapshots to ensure reliability, comparability, and produce meaningful trends over time.*



# What are the retention rates in my college?

Retention is based on the official reported metrics for the **entire university**. To measure the retention rates in your college, department, or academic plan you will need to filter your report by the entry attributes.

## Entry Attributes

- Academic Program Plan at Entry
- Academic Attributes at Entry
- Participation at Entry
- Financial Aid at Entry
- Military Affiliation at Entry



## Retention and Graduation

- Headcount
- Retention By Year
- Retention By Term
- Graduation By Year
- Graduation By Term

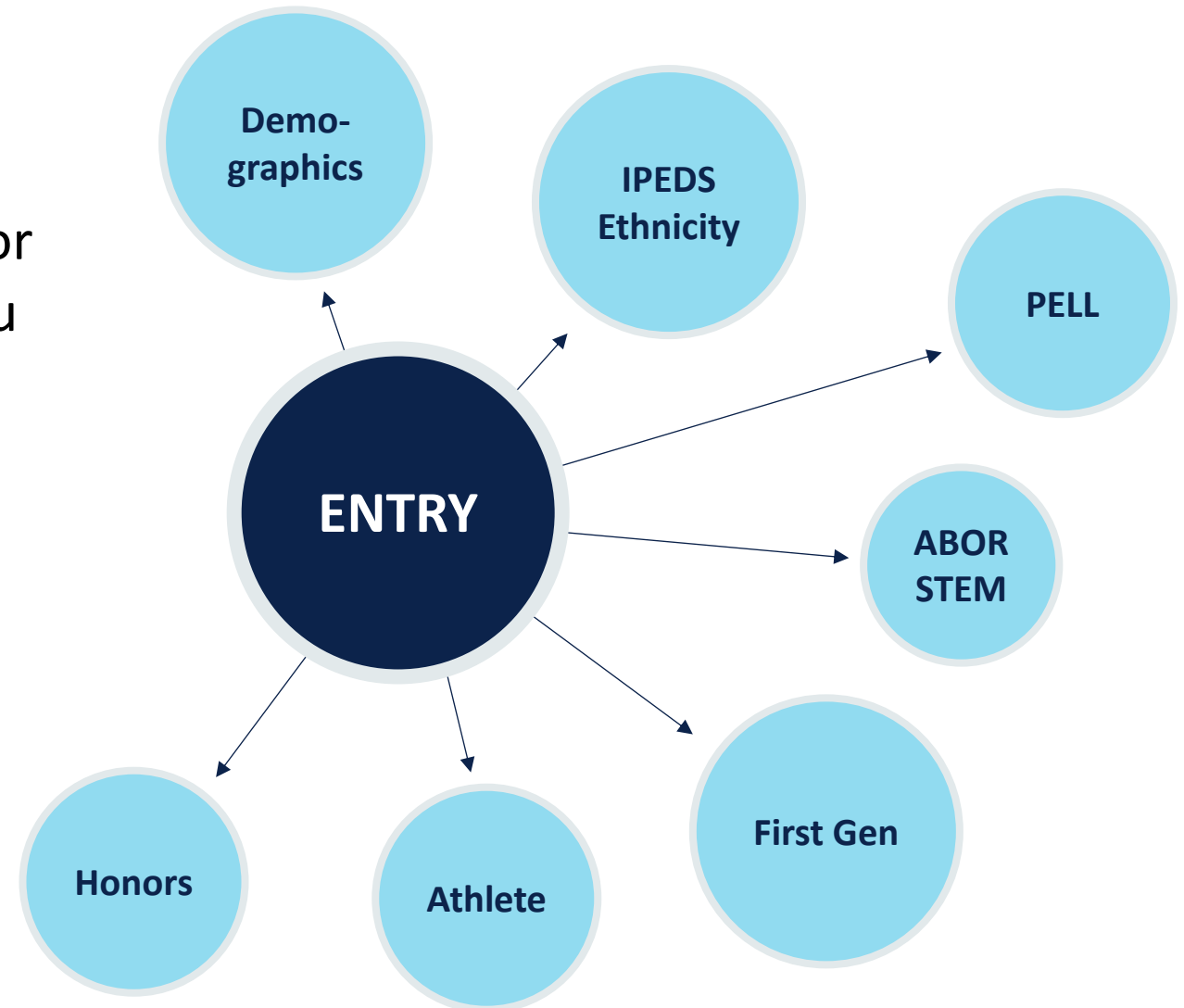
*\*\* There is currently not a way to report on retention within a college, department, or academic plan, but you can track student movement with Curricular Flow. \*\**





# What are the retention and graduation rates for specific student populations?

To track the retention and graduation rates for underrepresented students or other specific student populations you will need to filter your report by the entry attribute for that group.



**CSW – Student Retention and Graduation is the data source for the Retention and Graduation Dashboard.**



# RETENTION & GRADUATION RATES

DASHBOARD: Retention and Graduation

## THE STUDENT RETENTION AND GRADUATION

dashboards provide census reporting data on retention and graduation rates for the university. They allow users to easily view retention and graduation data for a specific cohort of either first-time or transfer students.



# Retention & Graduation | First-Year Students

## Overall Trends

### 1-Year Retention Rates

The University of Arizona calculates official retention rates with first-time, full-time students in the fall cohort, as defined by [IPEDS](#). The student must be enrolled on the 21st day of the subsequent fall semester to be counted as retained in the census file.

Fall 2014	Fall 2015	Fall 2016	Fall 2017	Fall 2018
80.4%	80.5%	83.3%	81.2%	83.2%

### 6-Year Graduation Rates

The University of Arizona calculates official graduation rates with first-time, full-time students in the fall cohort, as defined by [IPEDS](#). Graduation rate cycles include every degree awarded prior to fall census date of the following year. The rates are cumulative-- i.e., the graduation rate for year 6 includes all degrees earned in years 1-6.

Fall 2009	Fall 2010	Fall 2011	Fall 2012	Fall 2013
60.9%	59.9%	63.5%	64.5%	64.7%

## Cohort Trends

Filter for your group of students:

Cohort Term

Fall 2018;Fall 2017;Fall 2016;Fall

Academic Program Campus at Entry

--Select Value--

Academic Program Location at Entry

--Select Value--

College at Entry

--Select Value--

Plan Department at Entry

--Select Value--

Academic Plan at Entry

--Select Value--

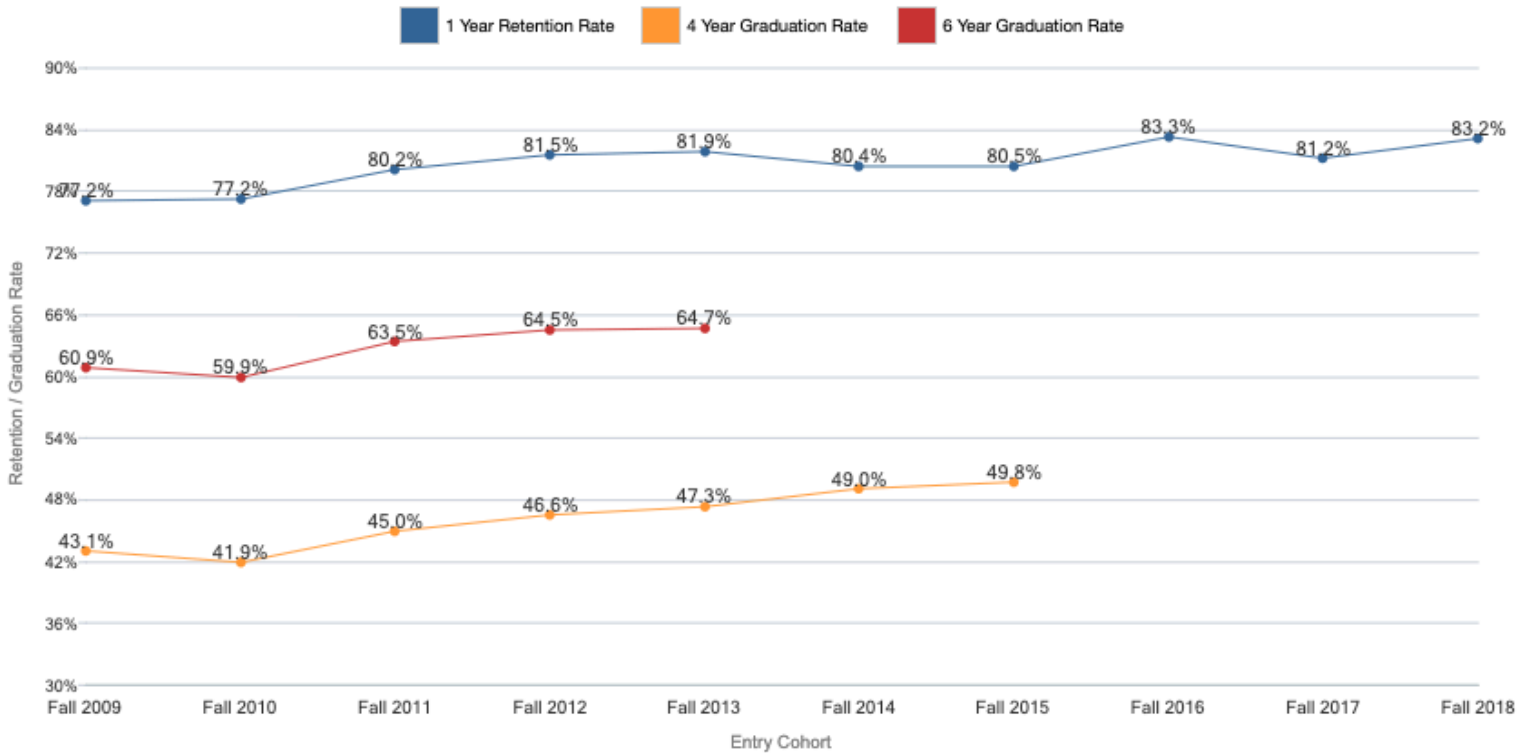
IPEDS Full-Time Part-Time at Entry

F

IPEDS Ethnicity at Entry

--Select Value--

Pre 2010 Ethnicity at Entry



# Retention & Graduation | Transfer Students

## Cohort Trends

Filter your group of students:

Cohort Term

Fall 2018;Fall 2017

Transfer Institution

--Select Value--

Academic Program Campus at Entry

--Select Value--

Transfer Institution 2-Year/4-Year

--Select Value--

Academic Program Location at Entry

--Select Value--

Transfer Institution Public/Private

--Select Value--

College at Entry

--Select Value--

Transfer Institution School Type

--Select Value--

Plan Department at Entry

--Select Value--

Transfer Institution State

--Select Value--

Academic Plan at Entry

--Select Value--

IPEDS Full-Time Part-Time at Entry

F

IPEDS Ethnicity at Entry

--Select Value--

Pre 2010 Ethnicity at Entry

--Select Value--

Gender at Entry

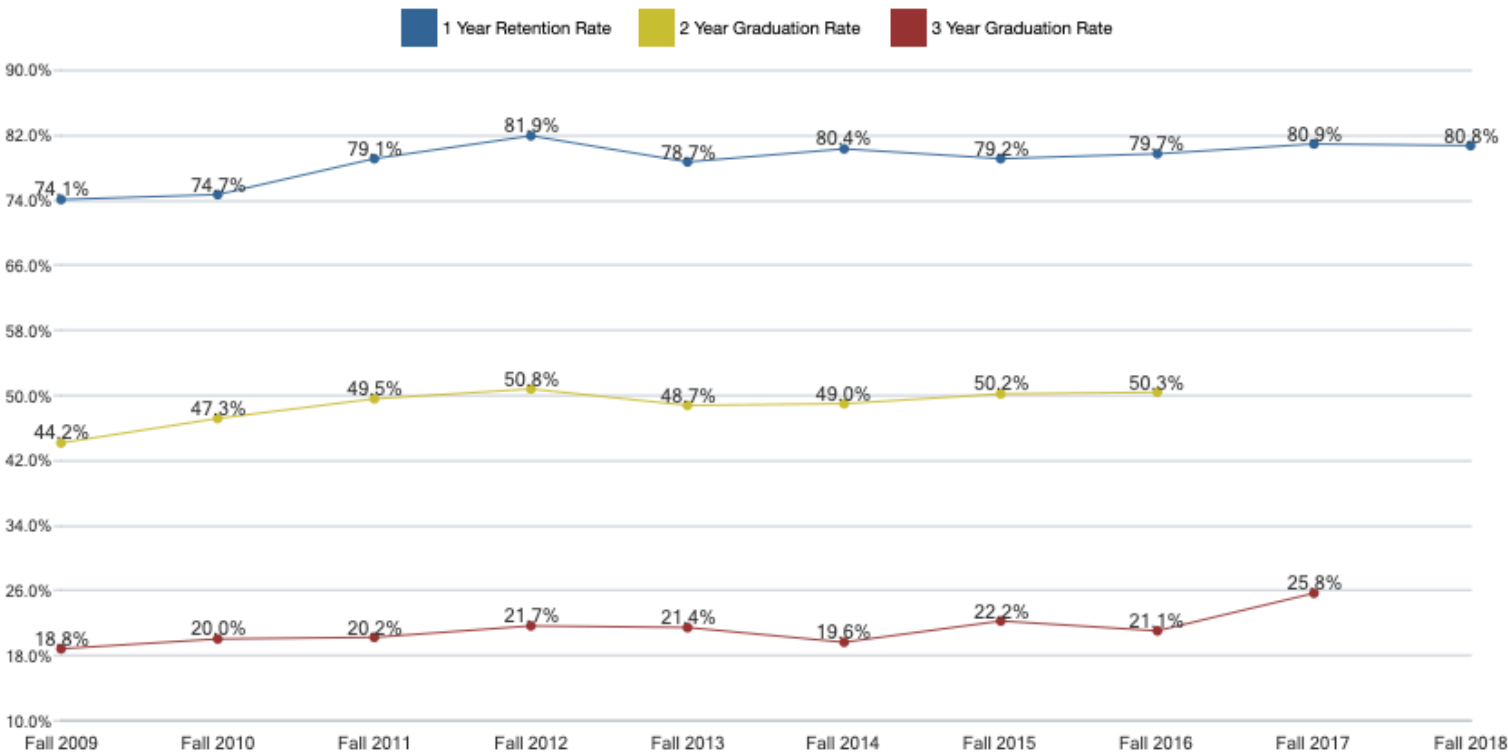
--Select Value--

IPEDS Residency at Entry

--Select Value--

Honors Flag at Entry

--Select Value--



Entry Cohort	Headcount	1 YR Retention Rate	2 YR Retention Rate	3 YR Retention Rate	1 YR Graduation Rate	2 YR Graduation Rate	3 YR Graduation Rate
Fall 2009	1,525	74.1%	49.6%	20.6%	1.9%	18.8%	44.2%
Fall 2010	1,382	74.7%	49.7%	19.0%	3.8%	20.0%	47.3%
Fall 2011	1,381	79.1%	50.9%	18.9%	0.6%	20.2%	49.5%
Fall 2012	1,501	81.9%	51.3%	18.5%	1.1%	21.7%	50.8%
Fall 2013	1,549	78.7%	50.9%	20.1%	0.9%	21.4%	48.7%
Fall 2014	1,640	80.4%	52.7%	20.7%	1.0%	19.6%	49.0%
Fall 2015	1,641	79.2%	48.6%	18.1%	0.9%	22.2%	50.2%



# What is the best way to follow cohorts of students?

## Retention & Graduation | Cohort Analysis

### Define your Entry Cohort:

#### Cohort Term

Fall 2018; Fall 2019 ▼

#### IPEDS Cohort at Entry

F ▼

#### Academic Program Campus at Entry

--Select Value-- ▼

#### Academic Program Location at Entry

--Select Value-- ▼

#### College at Entry

--Select Value-- ▼

#### Plan Department ID at Entry

--Select Value-- ▼

#### Academic Plan at Entry

--Select Value-- ▼

#### IPEDS Full-Time Part-Time at Entry

F ▼

#### IPEDS Ethnicity at Entry

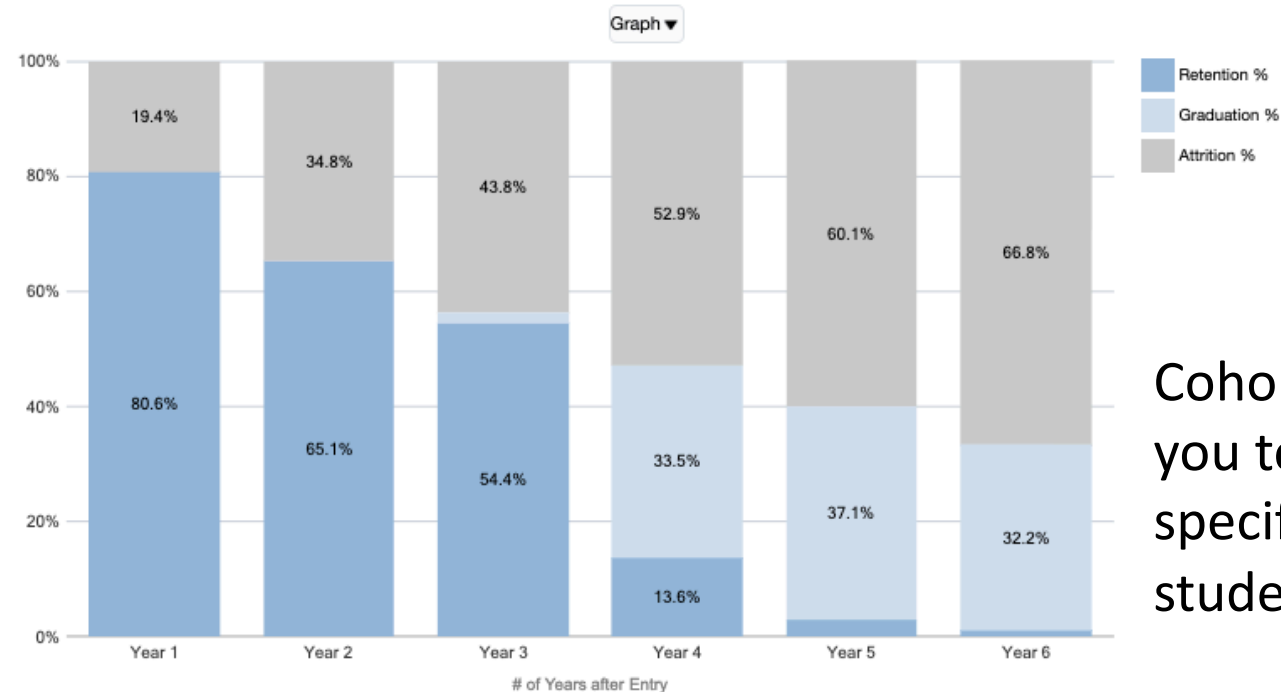
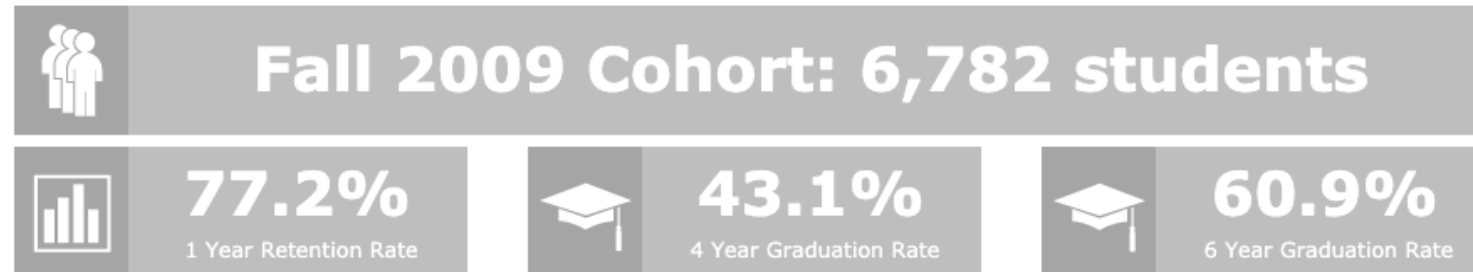
--Select Value-- ▼

#### Pre 2010 Ethnicity at Entry

--Select Value-- ▼

#### Gender at Entry

--Select Value-- ▼



Cohort Analysis allows you to filter data from specific cohorts of student populations.

# How can I best find retention and graduation information for specific majors?

You can filter both dashboards to show the Entry Plan for the specific major you want to track.

First Year

Filter for your group of students:

Cohort Term

Fall 2018;Fall 2017;Fall 2016;Fall

Academic Program Campus at Entry

--Select Value--

Academic Program Location at Entry

--Select Value--

College at Entry

--Select Value--

Plan Department at Entry

--Select Value--

Academic Plan at Entry

--Select Value--

IPEDS Full-Time Part-Time at Entry

F

IPEDS Ethnicity at Entry

--Select Value--

Pre 2010 Ethnicity at Entry

--Select Value--

Gender at Entry

--Select Value--

IPEDS Residency at Entry

--Select Value--

Honors Flag at Entry

--Select Value--

ABOR STEM Flag at Entry

--Select Value--

First Generation Flag

--Select Value--

Pell Recipient Flag at Entry

--Select Value--

Student ID(s)

--Select Value--

Apply

Reset

Transfer

Filter your group of students:

Cohort Term

Fall 2018;Fall 2017

Academic Program Campus at Entry

--Select Value--

Academic Program Location at Entry

--Select Value--

College at Entry

--Select Value--

Plan Department at Entry

--Select Value--

Academic Plan at Entry

--Select Value--

IPEDS Full-Time Part-Time at Entry

F

IPEDS Ethnicity at Entry

--Select Value--

Pre 2010 Ethnicity at Entry

--Select Value--

Gender at Entry

--Select Value--

IPEDS Residency at Entry

--Select Value--

Honors Flag at Entry

--Select Value--

First Generation Flag

--Select Value--

Pell Recipient Flag at Entry

--Select Value--

Student ID(s)

--Select Value--

Transfer Institution

--Select Value--

Transfer Institution 2-Year/4-Year

--Select Value--

Transfer Institution Public/Private

--Select Value--

Transfer Institution School Type

--Select Value--

Transfer Institution State

--Select Value--

Apply

Reset

# How many Fall 2015 College of Education First-Year students returned to UArizona for Fall 2016?

## Cohort Trends

Filter for your group of students:

Cohort Term

Fall 2009;Fall 2010;Fall 2011;Fall

Academic Program Campus at Entry

--Select Value--

Academic Program Location at Entry

--Select Value--

College at Entry

College of Education [EDUC]

Plan Department at Entry

--Select Value--

Academic Plan at Entry

--Select Value--

IPEDS Full-Time Part-Time at Entry

F

IPEDS Ethnicity at Entry

--Select Value--

Pre 2010 Ethnicity at Entry

--Select Value--

Gender at Entry

--Select Value--

IPEDS Residency at Entry

--Select Value--

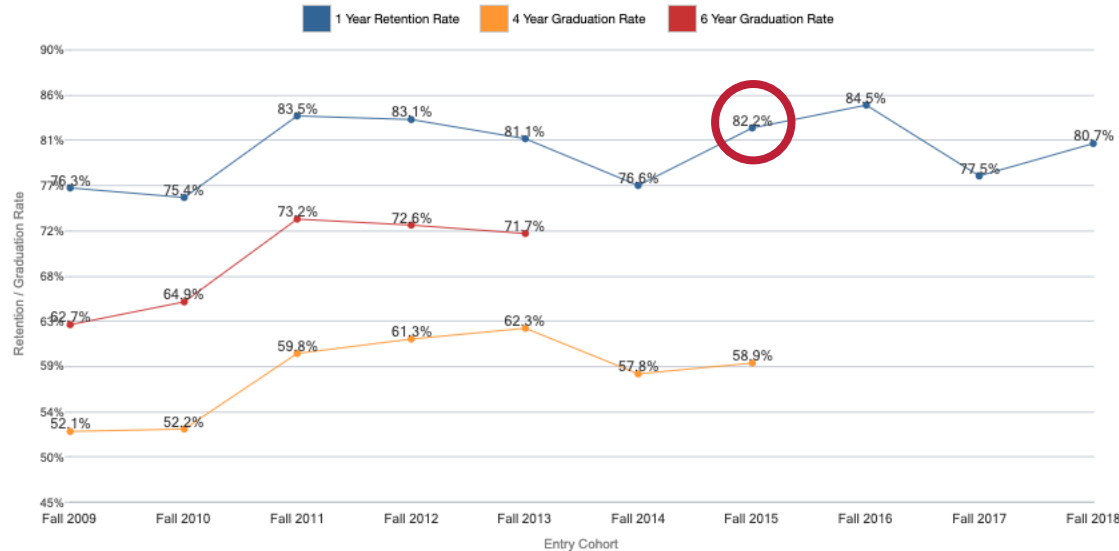
Honors Flag at Entry

--Select Value--

ABOR STEM Flag at Entry

--Select Value--

First Generation Flag



Entry Cohort	Headcount	1YR Retention Rate	2YR Retention Rate	3YR Retention Rate	4YR Graduation Rate	5YR Graduation Rate	6YR Graduation Rate
Fall 2009	169	76.3%	68.0%	63.9%	52.1%	61.5%	62.7%
Fall 2010	134	75.4%	71.6%	68.7%	52.2%	63.4%	64.9%
Fall 2011	127	83.5%	78.0%	73.2%	59.8%	70.9%	73.2%
Fall 2012	124	83.1%	76.6%	68.5%	61.3%	72.6%	72.6%
Fall 2013	106	81.1%	73.6%	70.8%	62.3%	68.9%	71.7%
Fall 2014	128	76.6%	68.8%	65.6%	57.8%	65.6%	
Fall 2015	107	82.2%	72.9%	68.2%	58.9%		
Fall 2016	84	84.5%	81.0%	75.0%			
Fall 2017	89	77.5%	70.8%				
Fall 2018	83	80.7%					

Analyze - Print - Export

The Retention and Graduation Dashboard can give you the **entry cohort count** and **percentages** of how many students returned to UArizona after a selected semester.





# My college has undergraduate programs that are not the standard 4-years. How do I find the data I need?

Filter for your group of students:

**Cohort Term**  
Fall 2009;Fall 2010;Fall 2011;Fall 2012

**Academic Program Campus at Entry**  
--Select Value--

**Academic Program Location at Entry**  
--Select Value--

**College at Entry**  
--Select Value--

**Plan Department at Entry**  
--Select Value--

**Academic Plan at Entry**  
--Select Value--

**IPEDS Full-Time Part-Time at Entry**  
F

**IPEDS Ethnicity at Entry**  
--Select Value--

**Pre 2010 Ethnicity at Entry**  
--Select Value--

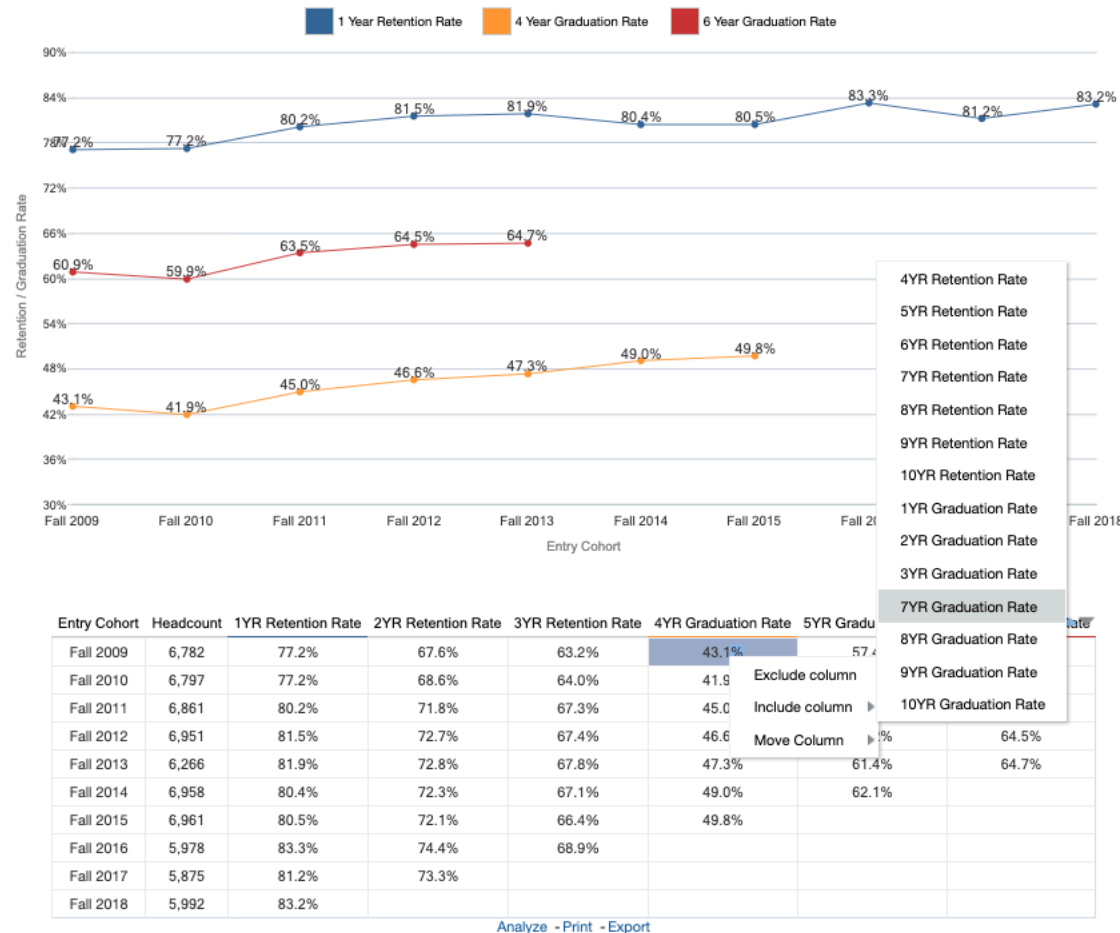
**Gender at Entry**  
--Select Value--

**IPEDS Residency at Entry**  
--Select Value--

**Honors Flag at Entry**  
--Select Value--

**ABOR STEM Flag at Entry**  
--Select Value--

**First Generation Flag**  
--Select Value--



To include additional retention and graduation rate year columns, **right click on the data table** on the dashboard page and click 'Include column'. From there you can choose from the list of years available.



# How do I find retention and graduation rates for groups of students that are not tracked in the current filters?

We have selected prompts that are commonly reported. Additional groups can be identified using the subject area such as student athletes. For groups that are not formally tracked in UAccess Student, there is a Student ID filter to report rates for that specific population.



A Specific Question from the Survey:

**How can I track changes into and out of my college, department, or academic plan?**

# How can I track changes into and out of my college, department, or academic plan?

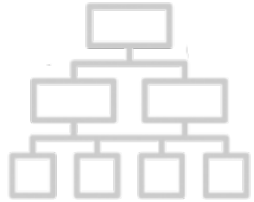


# EXPLORING CURRICULAR FLOW

Chris Dentel, Business Intelligence Developer



# CURRICULAR FLOW



- **DATA SOURCE:** CSW – CURRICULAR FLOW
- **TOOLS:** CURRICULAR FLOW DASHBOARDS
  - By College
  - By Department
  - By Plan
  - Student Detail

*Security Role: Open to users with Student Medium (BI\_SA\_MED) or higher*



# CURRICULAR FLOW

SUBJECT AREA: CSW – Curricular Flow

**CSW – CURRICULAR FLOW** is a subject area that serves as a source to perform analysis on the term-to-term changes/flow of students as they migrate between different academic plans, departments, and colleges.



# How can I use the CSW – Curricular Flow subject area?

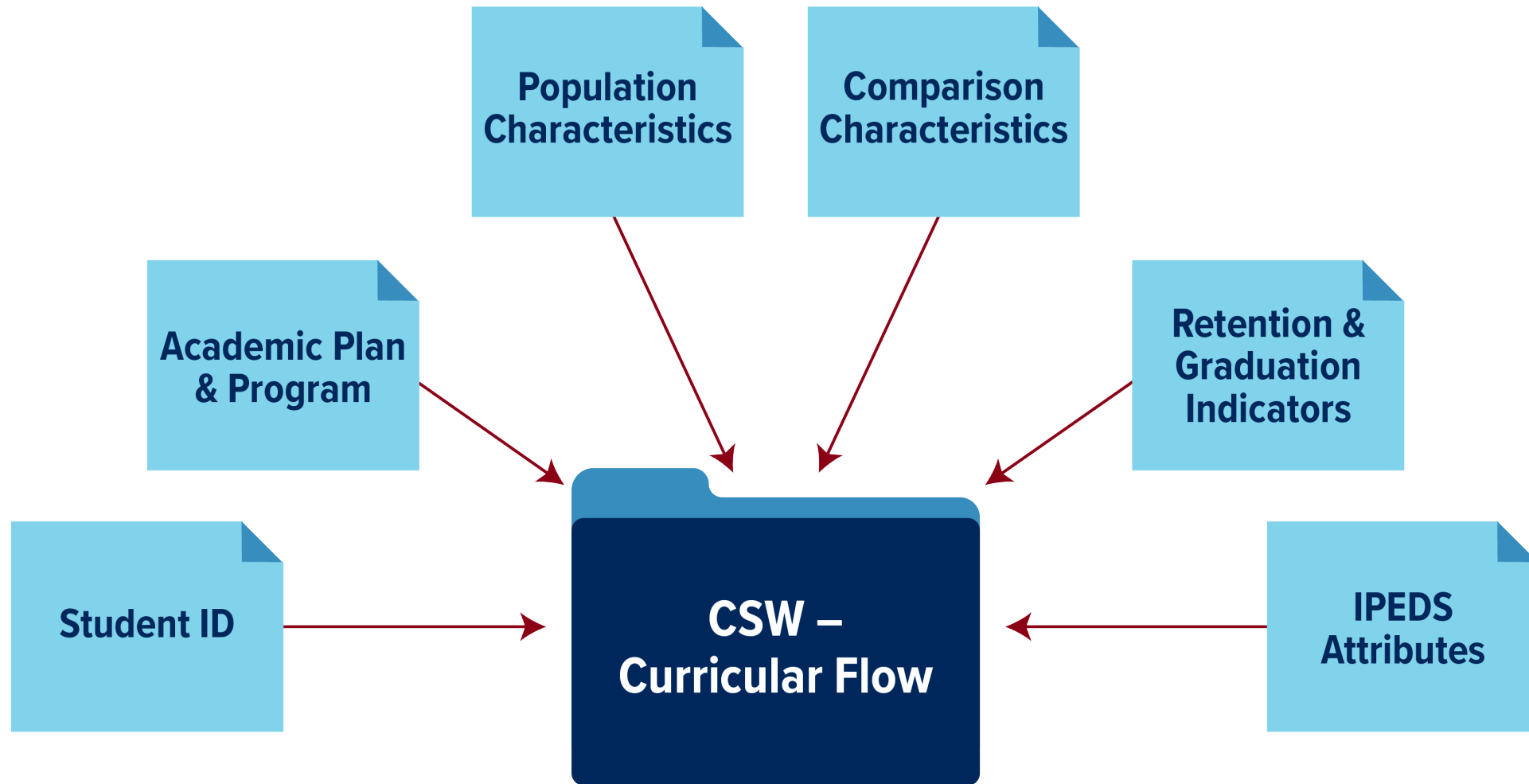
**COMMON USES** for this subject area include showing which Academic Plan, Department, or College students are flowing into your program from or out of your program to.

*This subject area is the data source for the **Curricular Flow** dashboards.*





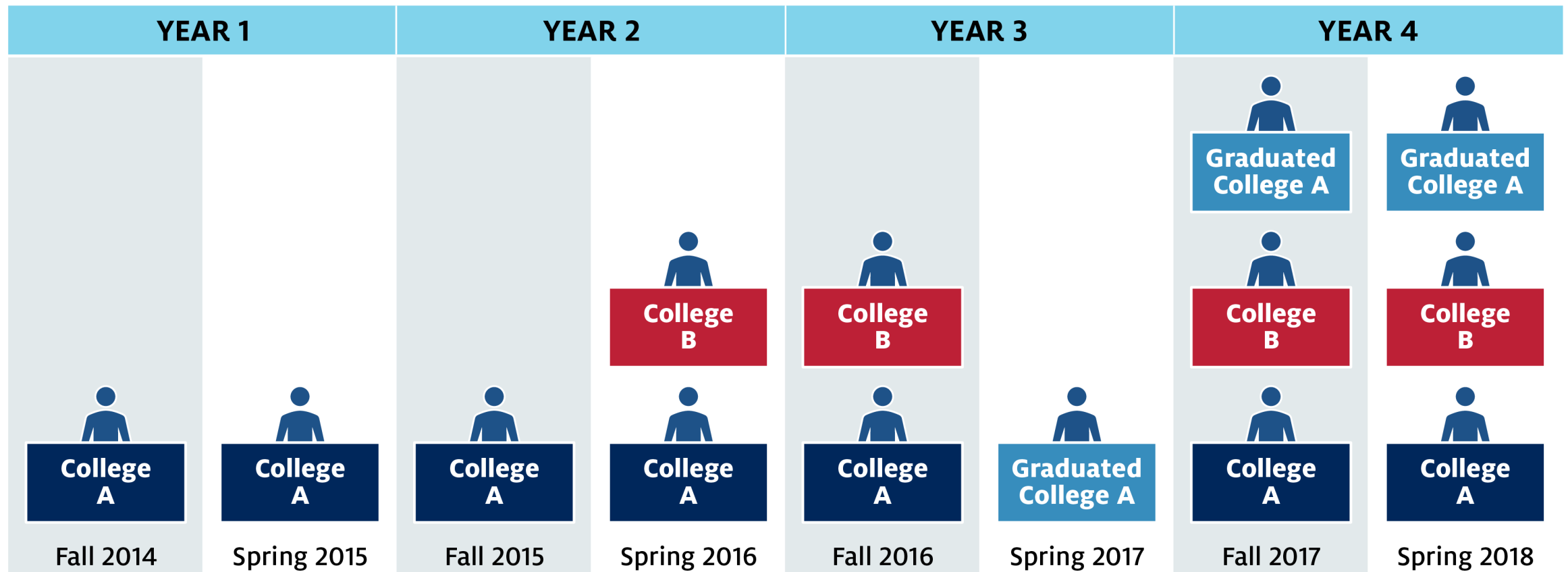
# TYPES OF INFORMATION



*This subject area is reloaded daily to reflect current up-to-date information when compared to UAccess Student.*

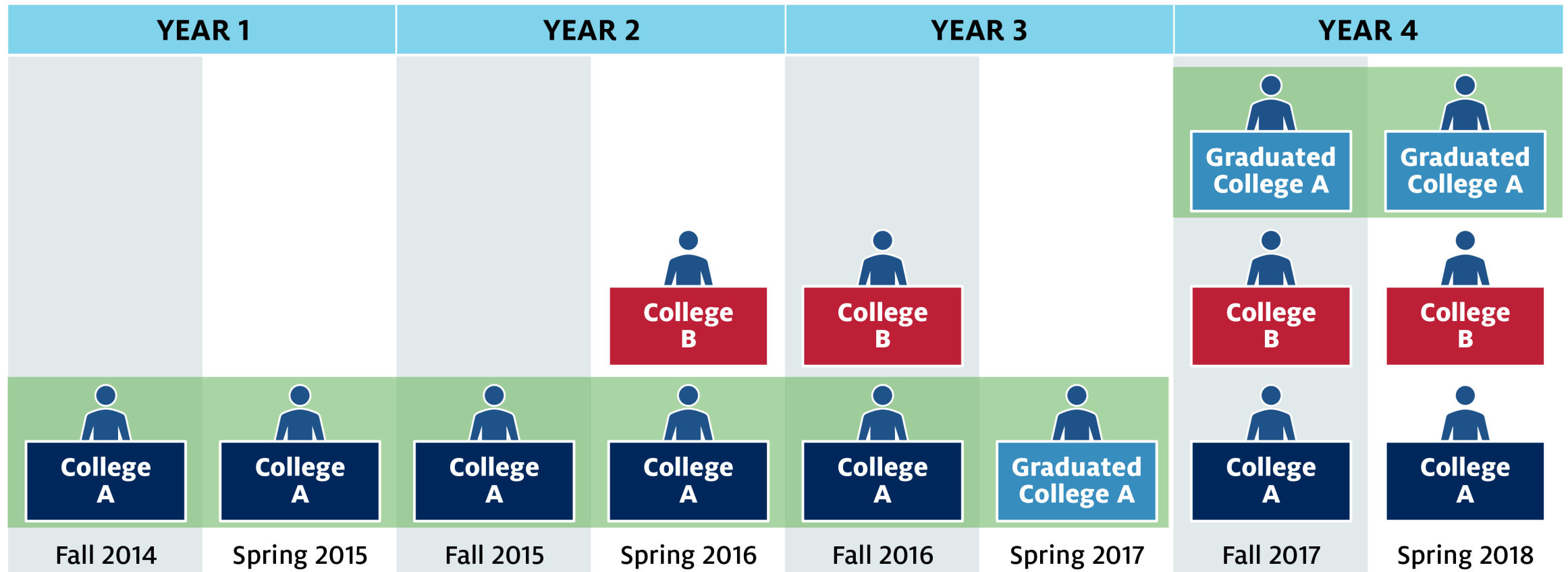
# How can I determine where our students are going (i.e. changing majors and student attrition)?

In this example, the student started in College A, and during Spring 2016 added another major in College B. The student graduated in Spring 2017 from College A. In Fall 2017, the student reapplied to the UA and had active majors in both College A and College B.



# The Curricular Flow > By College dashboard will count this student in the following way.

Retained in Same College (Fall 2014-Fall 2016) and Graduated from Same College (Spring 2017-Spring 2018)



# **CSW – Curricular Flow is the data source for the Curricular Flow Dashboard.**



# CURRICULAR FLOW

DASHBOARD: Curricular Flow

**CURRICULAR FLOW** is a new set of dashboards that are designed to provide counts and details of students as they move in and out of UArizona curriculum aggregated by college, department, or academic plan.



# Curricular Flow | By College

Dashboard updates nightly.

Based on a particular term and other selected criteria such as college and academic career, this tool tracks term-by-term flow of students as they migrate between retaining in the same or different colleges, graduating from the same or different colleges or leaving the institution. Only students that were enrolled in the term selected are included and it is possible for students to show up prior to the selection term.

The graph shows 997 students as they migrate through colleges prior to and following the Fall 2014 term.

Filter for your group of students:

\* Term  
Fall 2014

\* College  
College of Humanities

\* Academic Career  
Undergraduate

Academic Plan Type  
Major;Major (Secondary);Prepara

Primary Major Plan Flag  
--Select Value--

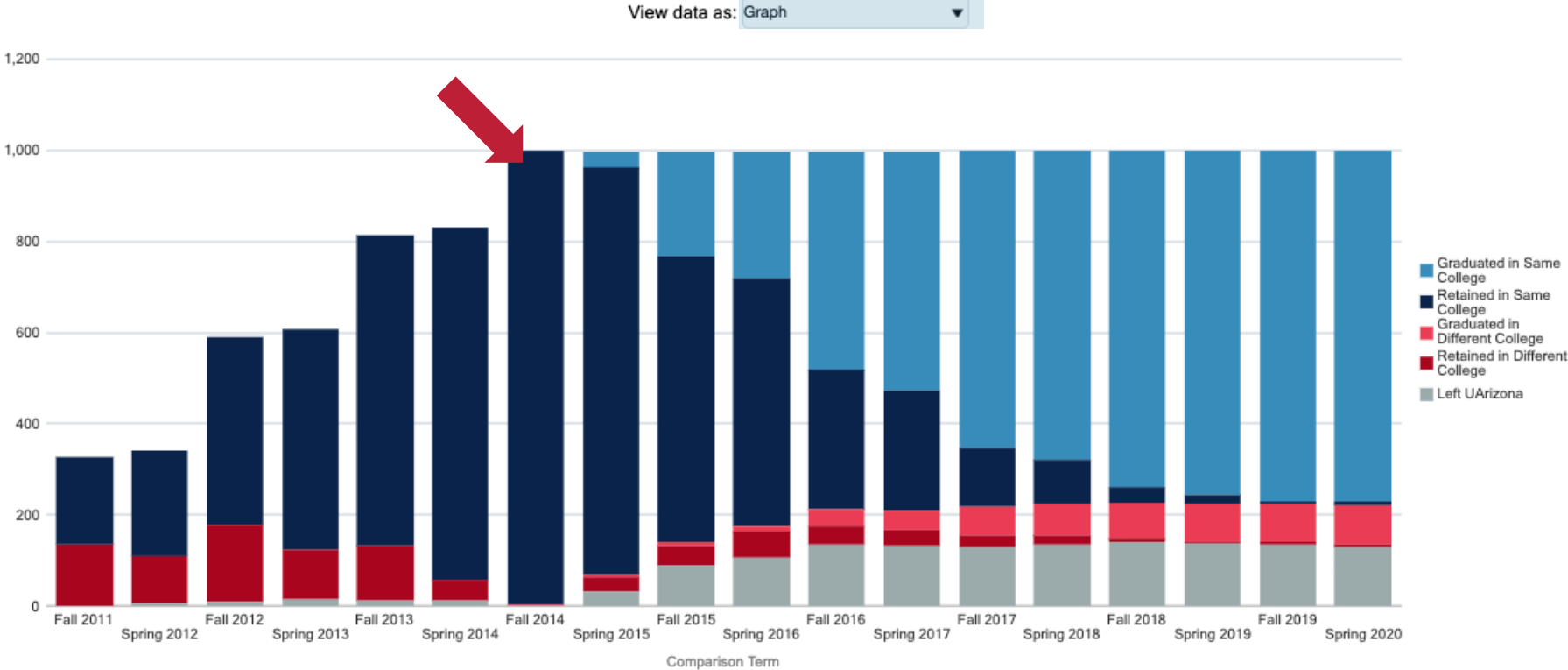
IPEDS Cohort  
☐ Freshman  
☐ Transfer

IPEDS Full Time Part Time  
F

IPEDS Ethnicity  
--Select Value--

Gender  
--Select Value--

Apply Reset



Analyze - Refresh - Print - Export

The data can be viewed as a bar graph.



# Curricular Flow | By College

Dashboard updates nightly.

Based on a particular term and other selected criteria such as college and academic career, this tool tracks term-by-term flow of students as they migrate between retaining in the same or different colleges, graduating from the same or different colleges or leaving the institution. Only students that were enrolled in the term selected are included and it is possible for students to show up prior to the selection term.

Filter for your group of students:

\* Term

Fall 2014 ▼

\* College

College of Humanities ▼

\* Academic Career

Undergraduate ▼

Academic Plan Type

Major;Major (Secondary);Prepara ▼

Primary Major Plan Flag

--Select Value--

IPEDS Cohort

☐ Freshman

☐ Transfer

IPEDS Full Time Part Time

F ▼

IPEDS Ethnicity

--Select Value-- ▼

Gender

--Select Value-- ▼

Apply

Reset ▼

The graph shows 997 students as they migrate through colleges prior to and following the Fall 2014 term.

View data as: Table (Counts & Percentages) ▼

Comparison Term	Headcount	Count Graduated in Same College	% Graduated in Same College	Count Retained in College	% Retained in Same College	Count Graduated in Different College	% Graduated in Different College	Count Retained in Different College	% Retained in Different College	Count Left UArizona	%Left UArizona
Fall 2011	327	0	0.0%	192	58.7%	0	0.0%	135	41.3%	0	0.0%
Spring 2012	340	0	0.0%	231	67.9%	0	0.0%	102	30.0%	7	2.1%
Fall 2012	589	0	0.0%	412	69.9%	0	0.0%	167	28.4%	10	1.7%
Spring 2013	606	0	0.0%	484	79.9%	0	0.0%	108	17.8%	14	2.3%
Fall 2013	812	0	0.0%	681	83.9%	0	0.0%	120	14.8%	11	1.4%
Spring 2014	829	0	0.0%	771	93.0%	0	0.0%	47	5.7%	11	1.3%
Fall 2014	997	0	0.0%	994	99.7%	3	0.3%	0	0.0%	0	0.0%
Spring 2015	997	37	3.7%	892	89.5%	4	0.4%	33	3.3%	31	3.1%
Fall 2015	997	230	23.1%	625	62.7%	11	1.1%	43	4.3%	88	8.8%
Spring 2016	997	279	28.0%	542	54.4%	14	1.4%	56	5.6%	106	10.6%
Fall 2016	997	480	48.1%	305	30.6%	38	3.8%	40	4.0%	134	13.4%
Spring 2017	997	525	52.7%	262	26.3%	43	4.3%	35	3.5%	132	13.2%
Fall 2017	997	651	65.3%	129	12.9%	63	6.3%	25	2.5%	129	12.9%
Spring 2018	997	675	67.7%	98	9.8%	68	6.8%	20	2.0%	136	13.6%
Fall 2018	997	735	73.7%	35	3.5%	78	7.8%	8	0.8%	141	14.1%
Spring 2019	997	753	75.5%	21	2.1%	82	8.2%	4	0.4%	137	13.7%
Fall 2019	997	767	76.9%	6	0.6%	84	8.4%	5	0.5%	135	13.5%
Spring 2020	997	768	77.0%	9	0.9%	86	8.6%	5	0.5%	129	12.9%

Analyze - Refresh - Print - Export

Or, the data can be viewed as a table with student counts.



# Headcount by Comparison College

Filter for your group of students:

\* Term

Fall 2014 ▼

\* College

College of Humanities ▼

\* Academic Career

Undergraduate ▼

Academic Plan Type

Major;Major (Secondary);Prepara ▼

Primary Major Plan Flag

--Select Value-- ▼

IPEDS Cohort

☐ Freshman

☐ Transfer

IPEDS Full Time Part Time

F ▼

IPEDS Ethnicity

--Select Value-- ▼

Gender

--Select Value-- ▼

Apply

Reset ▼

Comparison Term ▲▼	Comparison College	Graduated in Same College	Retained in Same College	Graduated in Different College	Retained in Different College	Left UArizona
Fall 2014	College of Humanities	0	994	3	0	0
Spring 2015	-	0	0	3	0	0
	Col Arch Plan & Landscape Arch	0	0	0	1	0
	College of Agric and Life Sci	0	0	0	6	0
	College of Education	0	0	0	2	0
	College of Engineering	0	0	0	3	0
	College of Fine Arts	0	0	0	3	0
	College of Humanities	37	892	1	0	0
	College of Medicine - Tucson	0	0	0	3	0
	College of Public Health	0	0	0	2	0
	College of Science	0	0	0	5	0
	College of Social & Behav Sci	0	0	0	11	0
	Colleges of Letters Arts & Sci	0	0	0	6	0
	Eller College of Management	0	0	0	4	0
	James C Wyant Coll Optical Sci	0	0	0	1	0
	Left UArizona	0	0	0	0	31
Fall 2015	-	0	0	10	0	0
	Col Arch Plan & Landscape Arch	0	0	0	1	0
	College of Agric and Life Sci	0	0	0	7	0
	College of Education	0	0	0	2	0
	College of Engineering	0	0	0	5	0
	College of Fine Arts	0	0	0	5	0
	College of Humanities	230	625	1	0	0
	College of Medicine - Tucson	0	0	0	2	0
	College of Nursing	0	0	0	1	0
	College of Public Health	0	0	0	3	0
	College of Science	0	0	0	6	0
	College of Social & Behav Sci	0	0	0	13	0
	Colleges of Letters Arts & Sci	0	0	0	9	0
	Eller College of Management	0	0	0	4	0
	James C Wyant Coll Optical Sci	0	0	0	1	0
	Left UArizona	0	0	0	0	88

Below the bar graph or table you will find the Headcount by Comparison for the selected college.





# Headcount by Comparison College

Filter for your group of students:

\* Term

Fall 2014

\* College

College of Humanities

\* Academic Career

Undergraduate

Academic Plan Type

Major;Major (Secondary);Prepara

Primary Major Plan Flag

--Select Value--

IPEDS Cohort

☐ Freshman

☐ Transfer

IPEDS Full Time Part Time

F

IPEDS Ethnicity

--Select Value--

Gender

--Select Value--

Apply

Reset

Comparison Term	Comparison College	Graduated in Same College	Retained in Same College	Graduated in Different College	Retained in Different College	Left UArizona
Fall 2014	College of Humanities	0	994	3	0	0
Spring 2015	-	0	0	3	0	0
	Col Arch Plan & Landscape Arch	0	0	0	1	0
	College of Agric and Life Sci	0	0	0	6	0
	College of Education	0	0	0	2	0
	College of Engineering	0	0	0	3	0
	College of Fine Arts	0	0	0	3	0
	College of Humanities	37	892	1	0	0
	College of Medicine - Tucson	0	0	0	3	0
	College of Public Health	0	0	0	2	0
	College of Science	0	0	0	5	0
	College of Social & Behav Sci	0	0	0	11	0
	Colleges of Letters Arts & Sci	0	0	0	4	0
	Eller College of Management	0	0	0	1	0
	James C Wyant Coll Optical Sci	0	0	0	1	0
	Left UArizona	0	0	0	0	31
Fall 2015	-	0	0	10	0	0
	Col Arch Plan & Landscape Arch	0	0	0	1	0
	College of Agric and Life Sci	0	0	0	7	0
	College of Education	0	0	0	2	0
	College of Engineering	0	0	0	5	0
	College of Fine Arts	0	0	0	5	0
	College of Humanities	230	625	1	0	0
	College of Medicine - Tucson	0	0	0	2	0
	College of Nursing	0	0	0	1	0
	College of Public Health	0	0	0	3	0
	College of Science	0	0	0	6	0
	College of Social & Behav Sci	0	0	0	13	0
	Colleges of Letters Arts & Sci	0	0	0	9	0
	Eller College of Management	0	0	0	4	0
	James C Wyant Coll Optical Sci	0	0	0	1	0
	Left UArizona	0	0	0	0	88

Below the bar graph or table you will find the Headcount by Comparison for the selected college.



# How many Fall 2014 College of Education Freshman students remained in the College of Education for the Fall 2015 semester?

## Curricular Flow | By College

Dashboard updates nightly.

Based on a particular term and other selected criteria such as college and academic career, this tool tracks term-by-term flow of students as they migrate between retaining in the same or different colleges, graduating from the same or different colleges or leaving the institution. Only students that were enrolled in the term selected are included and it is possible for students to show up prior to the selection term.

Filter for your group of students:

\* Term

Fall 2014

\* College

College of Education

\* Academic Career

Undergraduate

Academic Plan Type

Major;Major (Secondary);Prepara

Primary Major Plan Flag

--Select Value--

IPEDS Cohort

☒ Freshman

☐ Transfer

IPEDS Full Time Part Time

F

IPEDS Ethnicity

--Select Value--

Gender

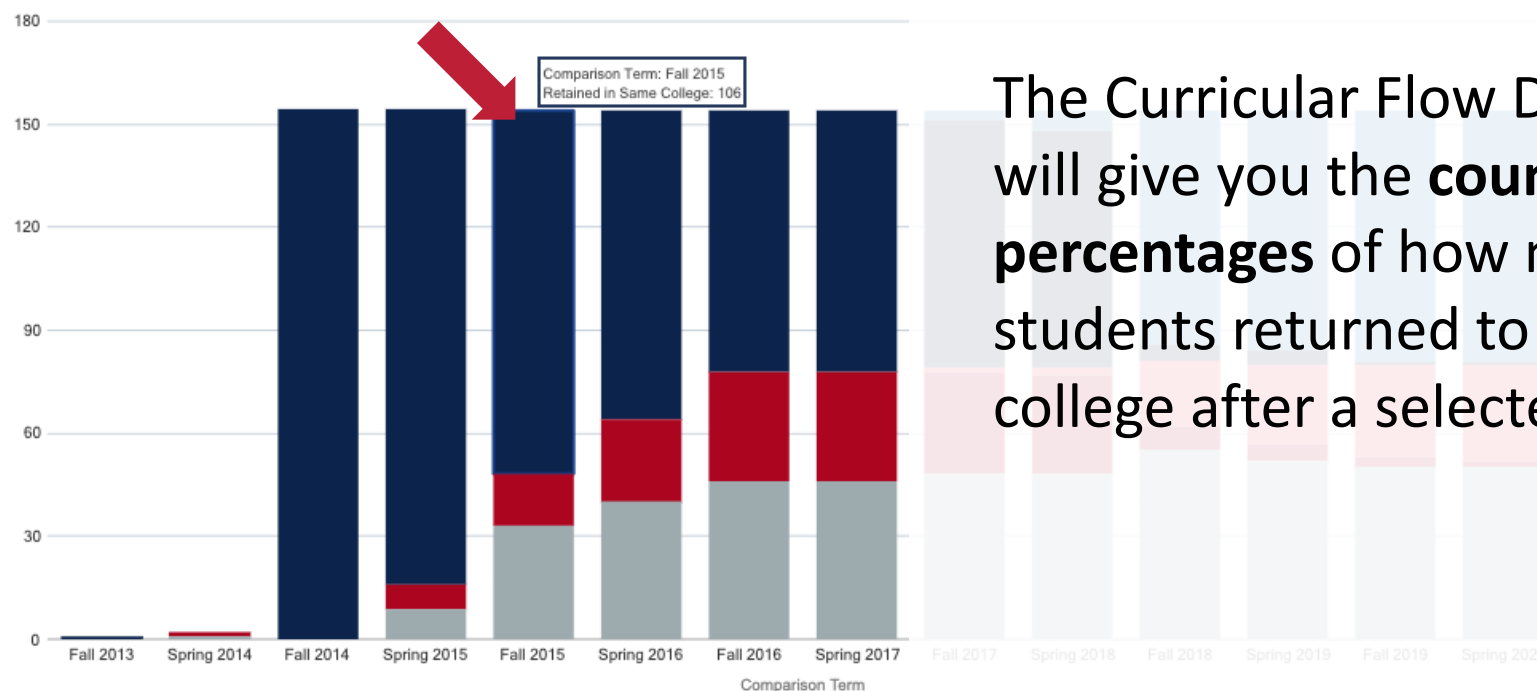
--Select Value--

Apply

Reset

The graph shows 154 students as they migrate through colleges prior to and following the Fall 2014 term.

View data as: Graph



The Curricular Flow Dashboard will give you the **counts and percentages** of how many students returned to a specific college after a selected term.

*106 students from the Fall 2014 Freshman cohort remained in the College of Education in Fall 2015.*



# How many Fall 2015 College of Science Freshman students graduated from the College of Science by Spring 2019?

## Curricular Flow | By College

Dashboard updates nightly.

Based on a particular term and other selected criteria such as college and academic career, this tool tracks term-by-term flow of students as they migrate between retaining in the same or different colleges, graduating from the same or different colleges or leaving the institution. Only students that were enrolled in the term selected are included and it is possible for students to show up prior to the selection term.

Filter for your group of students:

\* Term

Fall 2015

\* College

College of Science

\* Academic Career

Undergraduate

Academic Plan Type

Major;Major (Secondary);Prepara

Primary Major Plan Flag

--Select Value--

IPEDS Cohort

☒ Freshman

☐ Transfer

IPEDS Full Time Part Time

F

IPEDS Ethnicity

--Select Value--

Gender

--Select Value--

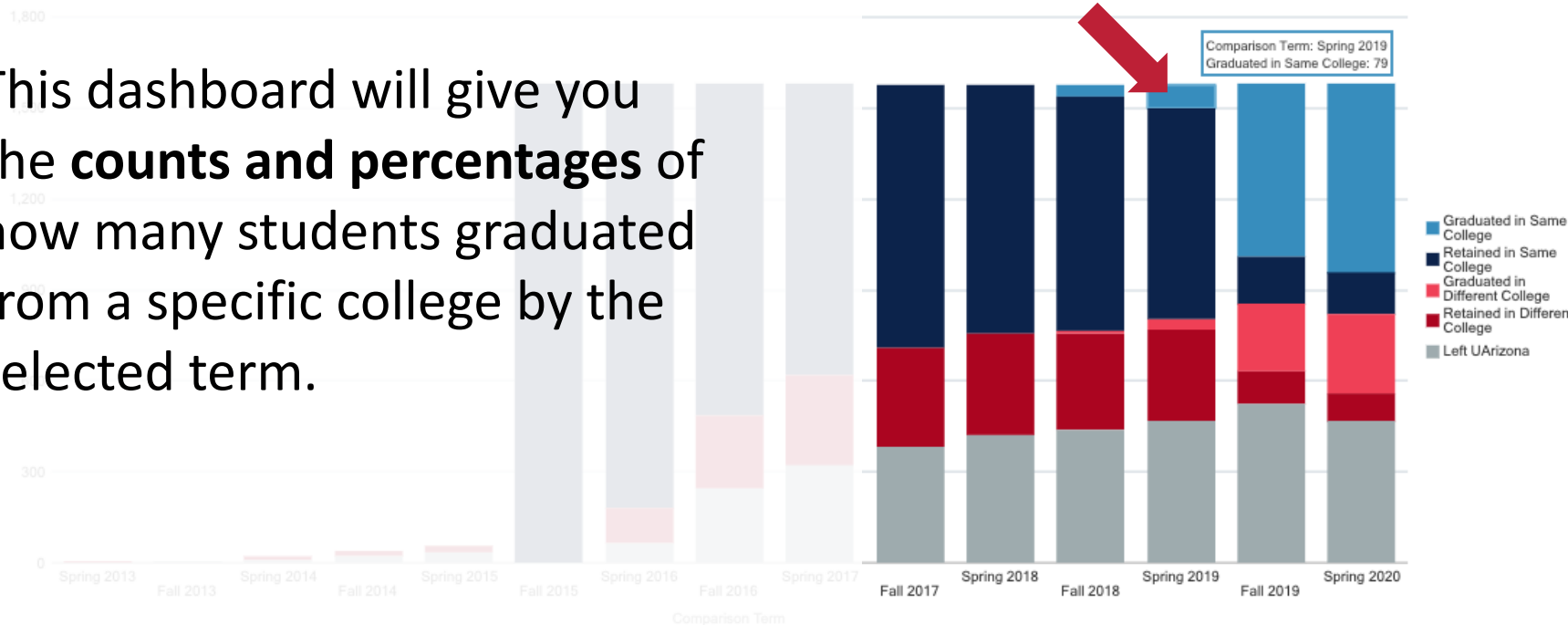
Apply

Reset

The graph shows 1,578 students as they migrate through colleges prior to and following the Fall 2015 term.

View data as: Graph

This dashboard will give you the **counts and percentages** of how many students graduated from a specific college by the selected term.



*79 students from the Fall 2015 Freshman cohort graduated from the College of Science by Spring 2019.*

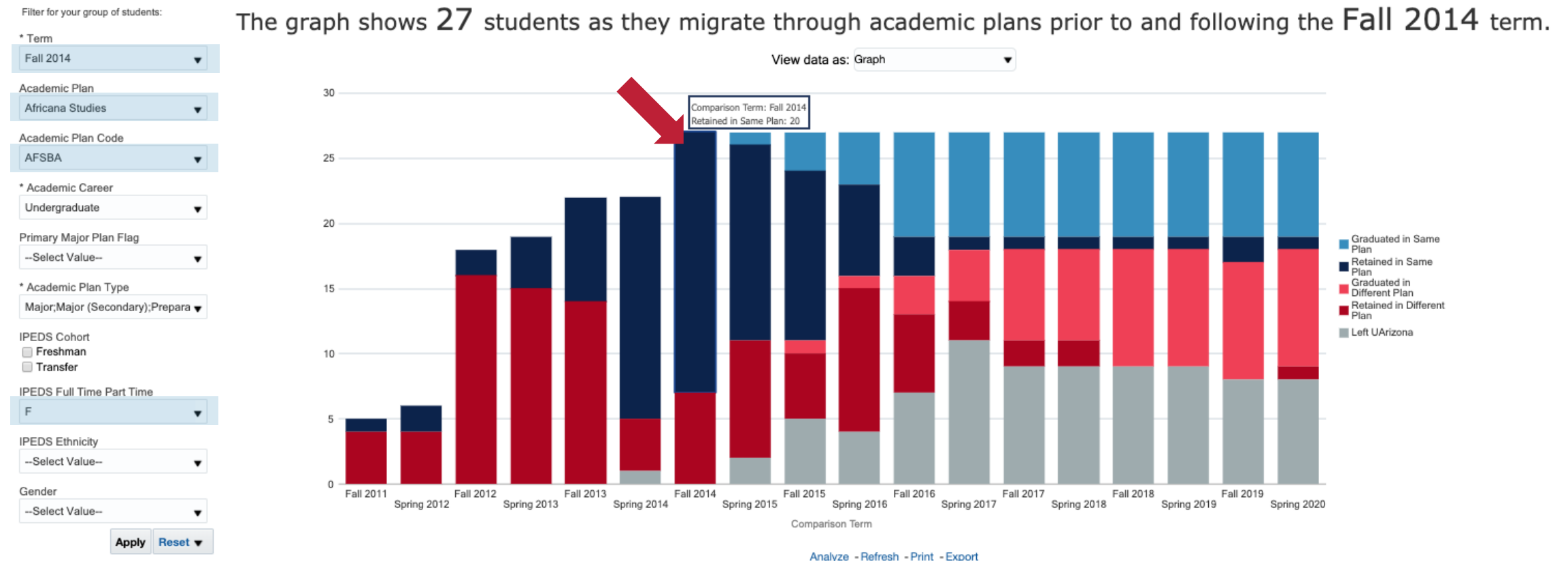


# What is the movement for all full-time students in the Africana Studies academic plan for the Fall 2014 term?

## Curricular Flow | By Plan

Dashboard updates nightly.

Based on a particular term and other selected criteria such as academic plan and academic career, this tool tracks term-by-term flow of students as they migrate between retaining in the same or different academic plan, graduating from the same or different academic plans or leaving the institution. Only students that were enrolled in the term selected are included and it is possible for students to show up prior to the selection term.



*This graph will show how your majors are moving into and out of your academic plan from semester to semester.*



# What is the movement for all graduate students in the Sociology Ph.D. plan for the Fall 2014 term?

## Curricular Flow | By Plan

Dashboard updates nightly.

Based on a particular term and other selected criteria such as academic plan and academic career, this tool tracks term-by-term flow of students as they migrate between retaining in the same or different academic plan, graduating from the same or different academic plans or leaving the institution. Only students that were enrolled in the term selected are included and it is possible for students to show up prior to the selection term.

Filter for your group of students:

\* Term  
Fall 2014

Academic Plan  
--Select Value--

Academic Plan Code  
SOCPHD

\* Academic Career  
Graduate

Primary Major Plan Flag  
--Select Value--

\* Academic Plan Type  
Major;Major (Secondary);Course

IPEDS Cohort  
☐ Freshman  
☐ Transfer

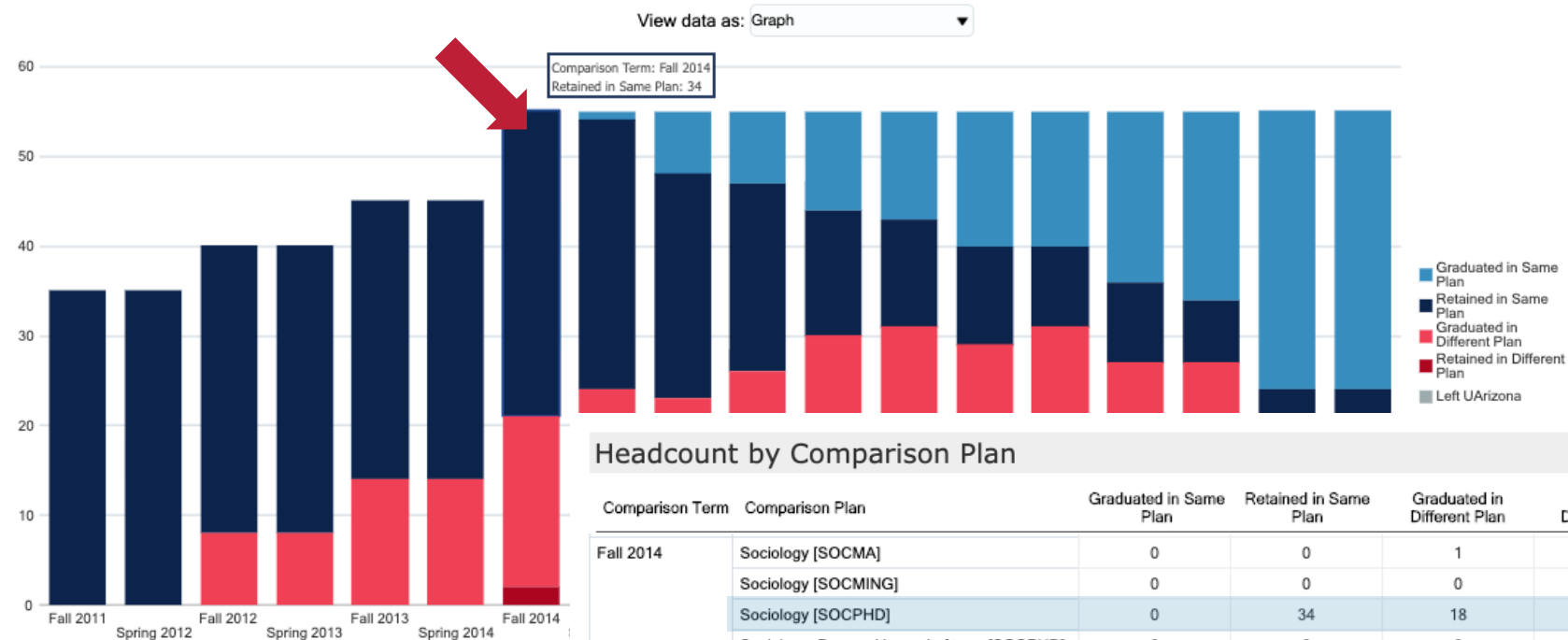
IPEDS Full Time Part Time  
--Select Value--

IPEDS Ethnicity  
--Select Value--

Gender  
--Select Value--

Apply Reset

The graph shows 55 students as they migrate through academic plans prior to and following the Fall 2014 term.



This graph will show how your graduate students are moving into and out of your program from semester to semester.

# How can I find the movement of specific student populations?

## Curricular Flow | Student Detail

Dashboard updates nightly.

Based on a particular term and other selected criteria such as academic plan and academic career, this tool tracks term-by-term flow of students as they migrate between retaining in the same or different academic plan, graduating from the same or different academic plans or leaving the institution. Only students that were enrolled in the term selected are included and it is possible for students to show up prior to the selection term.

Filter for your group of students:

\* Term  
Fall 2014

Academic Career  
Undergraduate

College  
--Select Value--

Department  
--Select Value--

Academic Plan  
Africana Studies

Academic Plan Code  
AFSBA

Student ID  
--Select Value--

Primary Major Plan Flag  
--Select Value--

Academic Plan Type  
Major;Major (Secondary);Prepara

IPEDS Cohort  
☐ Freshman  
☐ Transfer

IPEDS Full Time Part Time  
☒ F  
☐ P

IPEDS Ethnicity  
--Select Value--

Gender  
--Select Value--

ApplyReset

The table shows details for 27 students as they migrate through the curriculum prior to and following the Fall 2014 term.

Term	Student ID	Race/Ethnicity	Gender	College	Department	Academic Plan Type	Plan	Comparison Term	Comparison College Name	Comparison Department ID	Comparison Department	Comparison Plan	Graduated in Same Plan	Retained in Same Plan	Graduated in Different Plan	Retained in Different Plan	Left UA/Arizona
Fall 2014		African American	Male	College of Humanities	Africana Studies	Major	Africana Studies [AFSBA]	Fall 2011	College of Science	0420	Psychology & Ecology & Evolutionary Biology	Psychology [PSYCMINU]				Y	
								Spring 2012	College of Science	0420	Psychology	Psychology [PSYCMINU]				Y	
								Fall 2012	College of Science	0420	Psychology	Psychology [PSYCMINU]				Y	
								Spring 2013	College of Humanities	0435	Africana Studies	Africana Studies [AFSBA2]				Y	
								Fall 2013	College of Humanities	0435	Africana Studies	Africana Studies [AFSBA2]				Y	
								Spring 2014	-	-	-	-					Y
								Fall 2014	College of Humanities	0435	Africana Studies	Africana Studies [AFSBA2]				Y	
									College of Science	0423	Psychology	Psychology [PSYCBA]				Y	
								Spring 2015	College of Humanities	0435	Africana Studies	Africana Studies [AFSBA2]				Y	

We have built in filters for freshman and transfer cohorts, full-time vs. part-time, ethnicity, and gender. The subject area also has some flags for honors and international students which can be analyzed.

## How does the flow of students differ depending on field of study?

These dashboards will give you the opportunity to analyze the flow of students in any academic plan and compare that data to other fields of study.





# THE VALUE OF CUSTOMER EXPERIENCE

**UAIR** is here to provide ongoing customer experience, training, and support. We want the campus community to have the knowledge and the know-how to take full advantage of our products and services.



# STILL WANT TO KNOW MORE?

**TAKE ADVANTAGE OF OUR KNOWLEDGE.** UAIR is here to enhance data literacy and customer experience for campus.

- **UAIR Newsletter**  
(providing information and news to the campus community)
- **UAccess Analytics Training**  
(basic & intermediate level workshops)
- **Analytics Office Hours**  
(visit with our staff to have your individual questions answered)
- **UAccess Community**  
(a community of users and resources)
- **Data Exploration Series**  
(providing quarterly data literacy presentations)

Visit our website for more information or to sign-up: <https://uair.arizona.edu/>



**Connect with us.**

[uair.arizona.edu](http://uair.arizona.edu)

[uair@arizona.edu](mailto:uair@arizona.edu)





# University Analytics & Institutional Research

## THANK YOU

Please take our survey!

